

2/2/2006, Thursday

Drill holes for magnetometer cable penetration.

Enlarge AHRS subpanel hole, prime the edge, and fabricate reinforcement angles

Rivet reinforcement angles to the hole

Drill holes between fuel line and air line on side of fuselage for fuel sensor

Total time: 3 hours (793 hrs)

2/3/2006, Friday

Mount GMA340 tray and check out headset and found it not working



Remove AS and Alt and sand the superfil on the panel

Wire switches

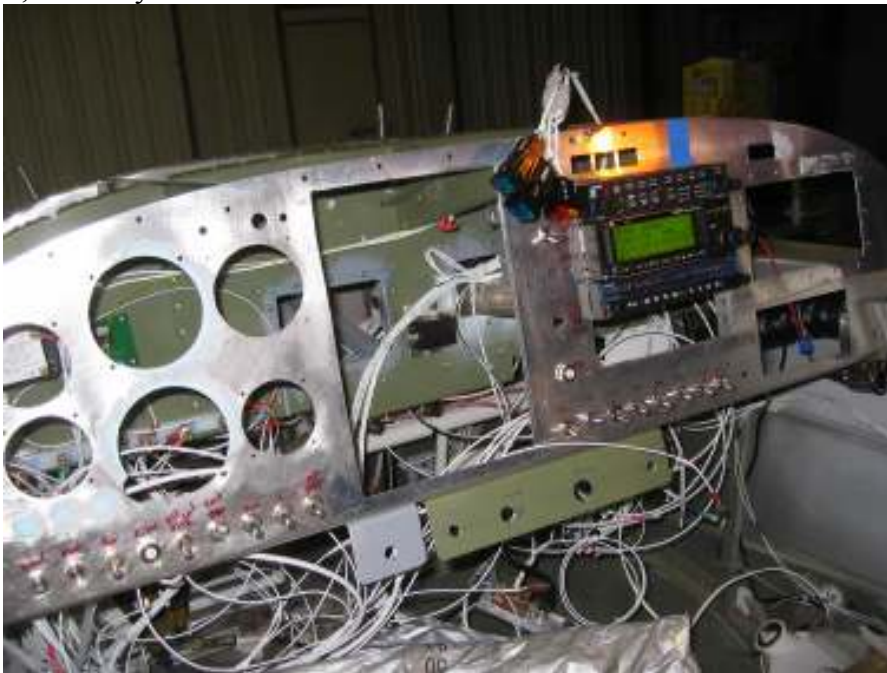


Test wiring; check out Aux battery connection, E-bus connection



Organize wires
Adjust canopy rail
Total time: 8 hours (801 hrs)

2/4/2006, Saturday



Re-wire phone and mic (reversed)
Mount SL30 and GNC300X
Testing radio, not working
Switch battery to the main battery box and test main switch and relay
Check out post lights
Total time: 3 hours (804 hrs)

2/5/2006, Sunday

Check out GPS card, working properly
Check out SL30, re-wire COM2 (SL30) antenna male connector

Remove Aux battery box and begin sawing the front off
Total time: 3 hours (807 hrs)

2/6/2006, Monday

Cut battery front, smooth, prime and paint
Remove transducer manifold to mount AN nipples
Total time: 2 hours (809 hrs)

2/7/2006, Tuesday



Finish transducer manifold mounting
Finish panel wiring, except for EFIS, EIS, clock, etc. missing items
Total time: 3 hours (812 hrs)

2/8/2006, Wednesday

Nutplates for fuse pressure sensor hose clamps
Nutplate for blow over tube clamp
Misc wiring
Receive engine, open the box and prepare for hanging.
Fuse hose, sensor hoses



Total time: 7 hours (819 hrs)

2/9/2006, Thursday

Cut battery box ss hinge

Prepare engine mount

Mount engine

Attach carburetor, fuel line, starter cable, etc.





Total time: 7 hours (826 hrs)

2/10/2006, Friday

Torque engine mount bolt to stop and install cotter pins.

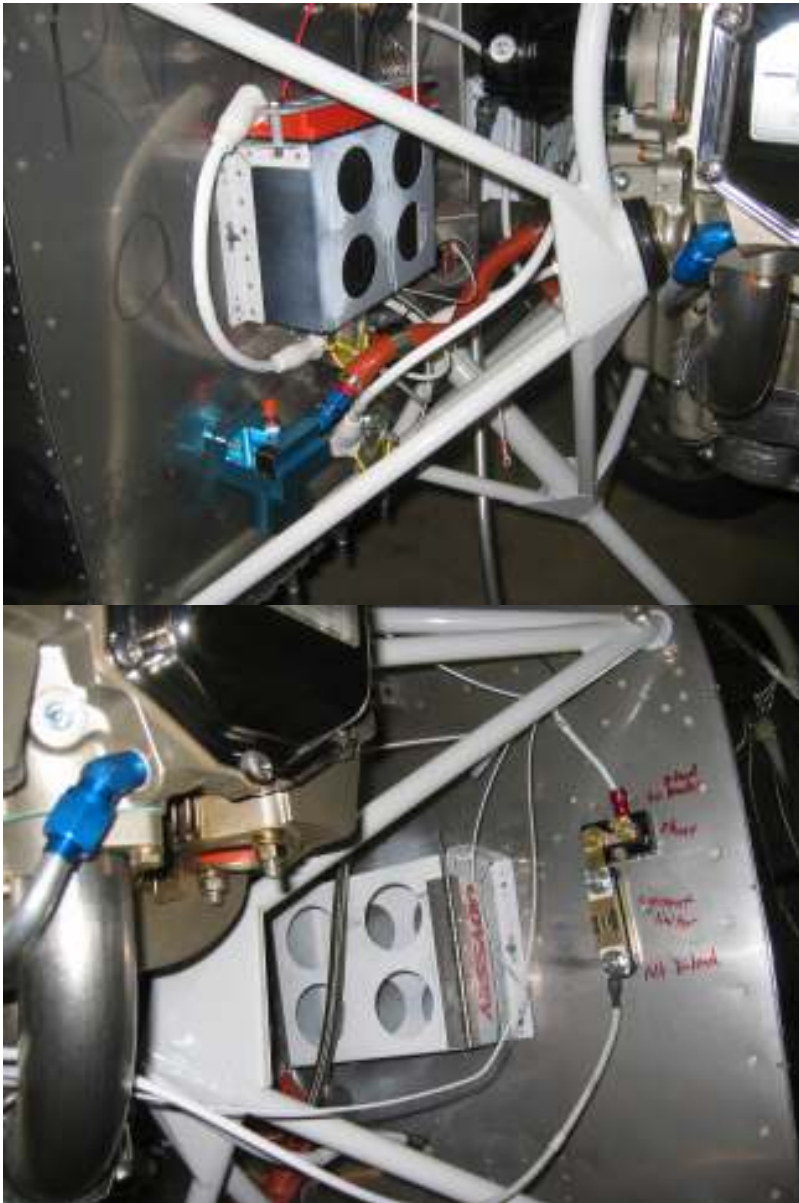
Crimp terminals for alternator cable, wire alternator b-lead and IGN wire
(need 5A breaker on the panel)

Finish Aux battery box hinges

Torque carburetor bolts

Wire clock connector

Figure out how to connect magneto p-lead and primer.



Total time: 6 hours (832 hrs)

2/13/2006, Monday

Make temp prop extension and test fit upper cowl
Torque engine mounting bolts and insert cotter pins



Bolt in adel clamp for starter cable



Mount Turn and Bank to panel
Total time: 5 hours (837 hrs)

2/14/2006, Tuesday
Fit cowl,



Trim both upper and lower cowl
Drill hinge holes for upper cowl
Drill side hinge holes



Prime face plate
Try to fit propeller extension
Total time: 7 hours (844 hrs)

2/15/2006, Wednesday

Fit propeller extension pound in with the axe back
Mount propeller (wrong bolts were supplied)



Install exhaust system
Install control bracket between carburetor and sump



Drill hinge to upper cowl
Total time: 6 hours (850 hrs)

2/16/2006, Thursday

Turn out to be wrong propeller, remove extension from the propeller
Torque exhaust bolts and nuts
Try to fit upper cowl with lower cowl
Total time: 3.5 hours (853.5 hrs)

2/17/2006, Friday



Trim front and part of the side of lower cowl
Fit upper cowl with lower cowl
Drill bottom hinges
Drill side hinges
Remove upper cowl and trim lower cowl side
Reinstall upper cowl, need to trim bottom of upper cowl



Total time: 3.5 hours (857 hrs)

2/20/2006, Monday

Trim upper and lower cowl joints

Drill in hinges for both upper and lower cowl
Mark cowl gap to be trimmed or glassed (adding)
Begin laying out baffle (confusing)
Total time: 6 hours (863 hrs)

2/21/2006, Tuesday

Prepare all reinforcement plates, prime
Fabricate parts from angles



Fabricate 1/4" rear baffle spacer



Trim and mount side baffles
Total time: 7 hours (870 hrs)

2/22/2006, Wednesday

Finish back bulkhead
Fabricate parts
Working on front bulkhead
Very tedious work!!



Total time: 7 hours (877 hrs)

2/23/2006, Thursday

Work on left front and floor

Files, snip, drill, cut, ..., hardwork!!!

Total time: 3 hours (880 hrs)

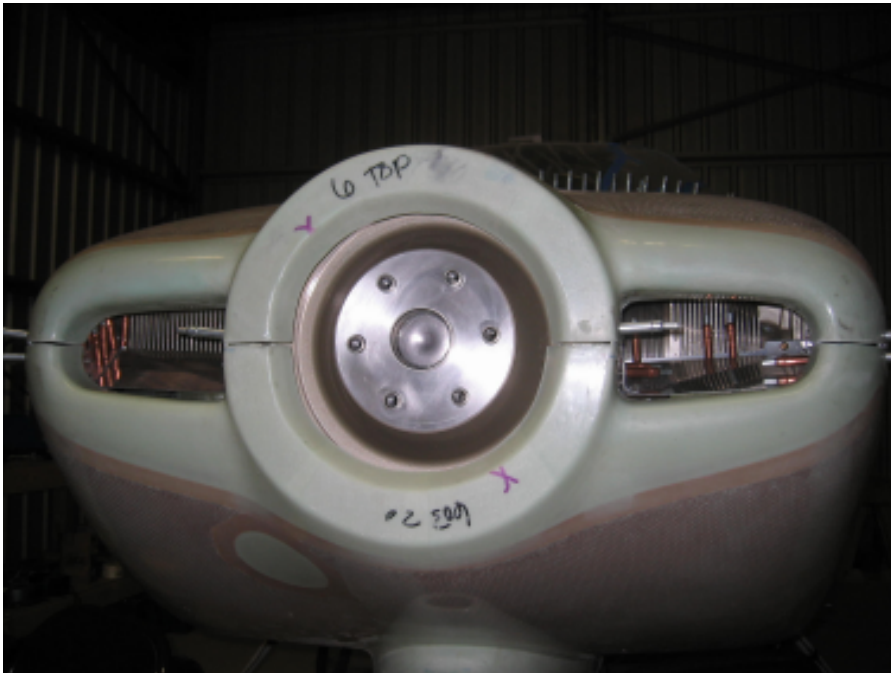
2/24/2006, Friday

Fit the support brackets for left floor

Fit right front and floor

Trim top to fit upper cowl





Rough trim complete
Total time: 6 hours (886 hrs)

2/27/2006, Monday

Baffle

Fabricate reinforcement angle, drill in, rivet

Trim the 3/8" clearance on top, smooth edges (finished back and sides)

Cut oil cooler opening and drill installation holes

Total time: 7 hours (893 hrs)

2/28/2006, Tuesday

Continue baffle work

Prime and rivet

Total time: 7 hours (900 hrs)

3/1/2006, Wednesday

Continue baffle



Punch 2 2" holes for cabin and carb heat
Drill
Total time: 6 hours (906 hrs)

3/2/2006, Thursday
Baffle



Make and rivet bottom reinforcement tabs



Rivet baffle parts together, trim again
Trim inlet and add airseal at inlet



Upper air inlet glassed in
Total time: 7 hours (913 hrs)

3/3/2006, Friday

Baffle

Fix oil cooler doubler



Install SCAT tube for cabin heat, adjust muffler positions, reroute fuel line
Mount 2" flanges

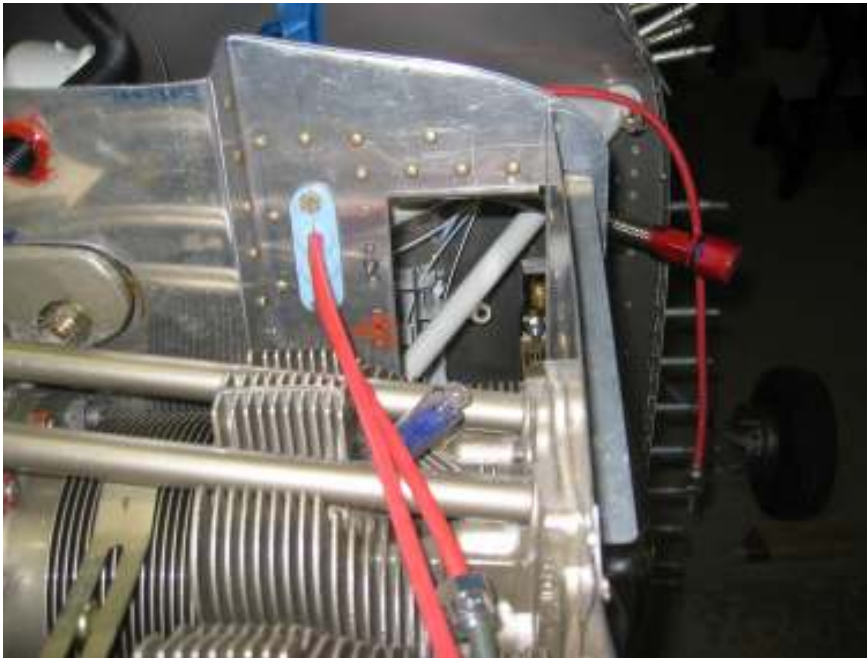


Drill Mag lead hole



Alternative door for air box
Total time: 8 hours(921 hrs)

3-4-2006, Saturday



Rivet last two nutplates for oil cooler (take baffle out again)
Fit top plate of air box, trim, match drill with mounting plate
(remove mufflers and put up and take off lower cowl 7 times)
Fabricate air filter mounting clips, match drill and rivet in place on top plate



Trim rim of air filter to match with carburetor
RTV air filter
Total time: 8 hours (929 hrs)

3/6/2006, Monday



Shrink top plate to curve up and align with inlet
Trim air box



Drill rivet holes on air box and top plate



Test install oil cooler, adjust angle of couplers
Put mufflers back
Total time: 7 hours (936 hrs)

3/7/2006, Tuesday

Miscellaneous engine work
Cut carb heat door and components
Flying
Total time: 5 hours (941 hrs)

3/8/2006, Wednesday



Airbox, prime parts



Cut oil cooler spacers and mount oil cooler
Total time: 7 hours (948 hrs)

3/9/2006, Thursday



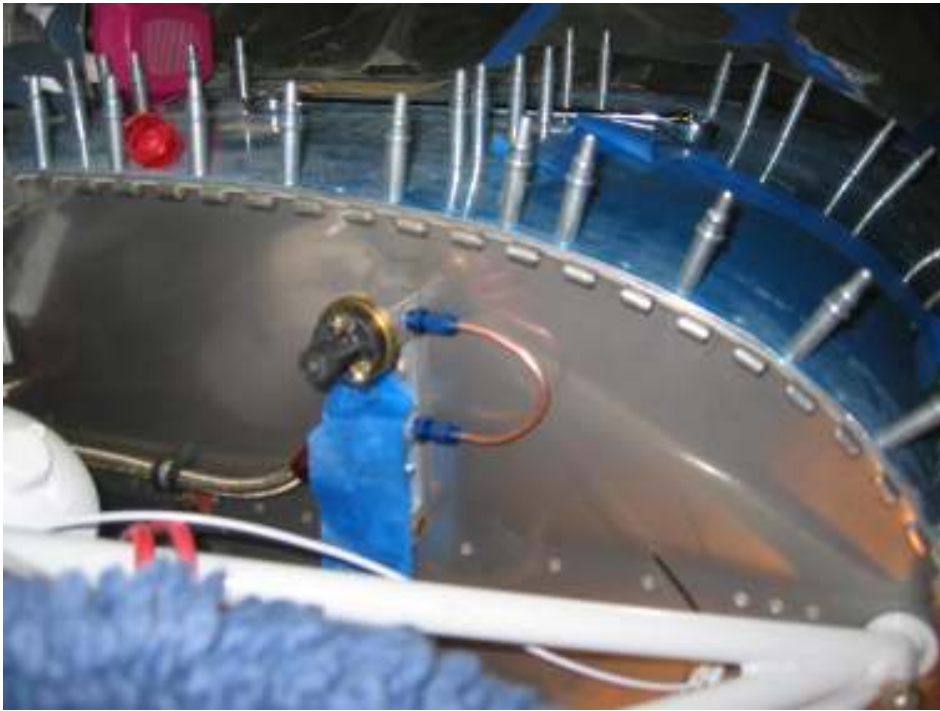
Glass airbox



Glass HS and VS tips



Connect oil pressure line (first take out vacuum port to install the restrictor)



Connect oil pressure switch and oil pressure transducer ports



Mount prime connector (cut left baffle bottom to clear)
Install heat shield for starter and alternator wires
Total time: 5 hours (953 hrs)

3/10/2006, Friday

Trim left heat muff to fit





Glass in hinges for cowl
Build air box inlet fairing
Cut hinge pins
Total time: 7 hours (960 hrs)

3/13/2006, Monday

Countersink then rivet cowl hinges
2nd layer of inlet fairing
Total time: 7 hours (967 hrs)

3/14/2006, Tuesday

Chip out inlet fairing form block
Trim inlet fairing
Drill firewall hole for emergency air control cable
Install engine control cables
Total time: 2 hours (969 hrs)

3/15/2006, Wednesday

Connect magneto p-leads
Cut slots for oil door latch (remove the old one)
Total time: 3 hours (972 hrs)

3/16/2006, Thursday

Rivet airbox



Epoxy work on airbox
Trim and fit left muffler



Install oil door latches
Modify oil door opening on upper cowl and glass in strike plate



Move E-bus back to panel support and rewire

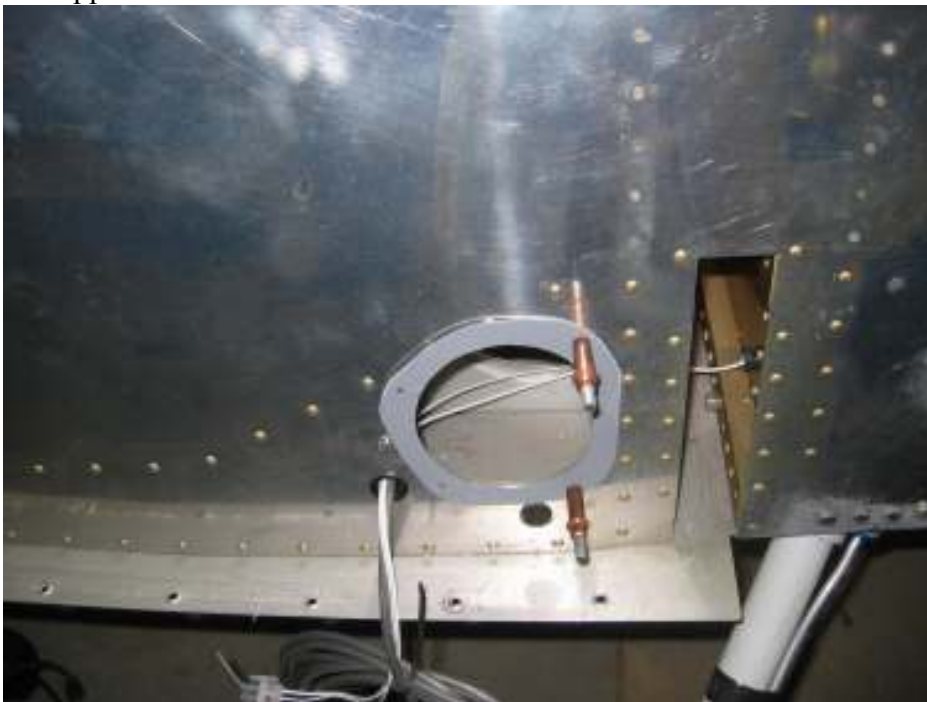


Wire clock and turn and bank
Partially sealed baffle using high temp RTV
Total time: 8 hours (980 hrs)

3/17/2006, Friday



Cut upper skin access holes



Fabricate aileron push rod boot retainers
Total time: 8 hours (988 hrs)

3/20/2006, Monday

Cut gap between lower and upper cowls

Fit piano pins

Still have problem with bottom pins and right top pins

Trim inlet fairing again

Total time: 3 hours (991 hrs)

3/21/2006, Tuesday

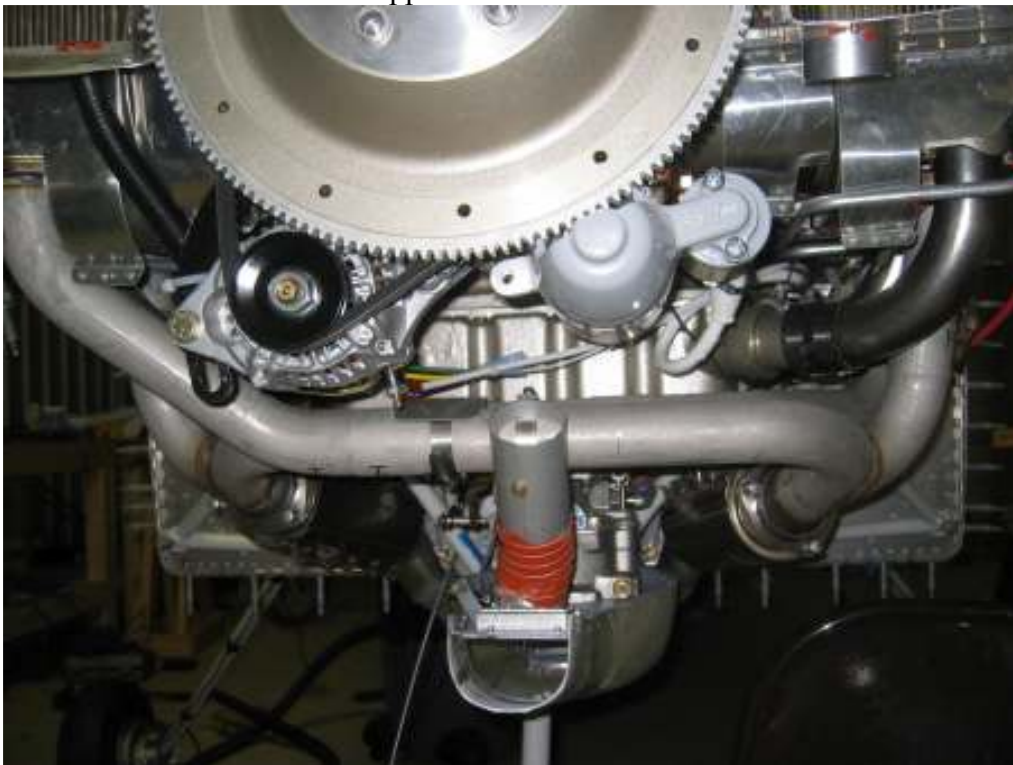
Snow, no work

3/22/2006, Wednesday

Fit all piano pins (remove excessive epoxy from the hinge)



Drill holes for bottom cowl support



Install carb heat muffle



Sand cowl inlet
Red RTV filling baffle gaps
Total time: 4 hours (995 hrs)

3/24/2006, Friday

Solder magneto timing device



Prime and paint bottom cowl nose gear gap bracket
Install air seal for air box



Install platenuts on aileron push rod boot retainers



Install platenuts on lower cowl for hinge pins
Total time: 5 hours (1000 hrs)

3/27/2006, Monday

Received propeller again. Try to hammer in extension, not successful.

Bolt on (only one bolt will go) main gear leg cover bracket

Mark propeller cut out on spinner

Misc other works

Total time: 5 hours (1005 hrs)

3/28/2006, Tuesday

Begin baffle seal

Counter sink firewall hinges

Firewall seal material out of date
Total time: 2 hours (1007 hrs)

3/29/2006, Wednesday
Finish baffle seal



Hammer in propeller extension
Total time: 6 hours (1013 hrs)

3/30/2006, Thursday



Bolt on main gear leg cover bracket (both bolts)
One more layer of glass for air inlet fairing



Fill glass for lower cowl side

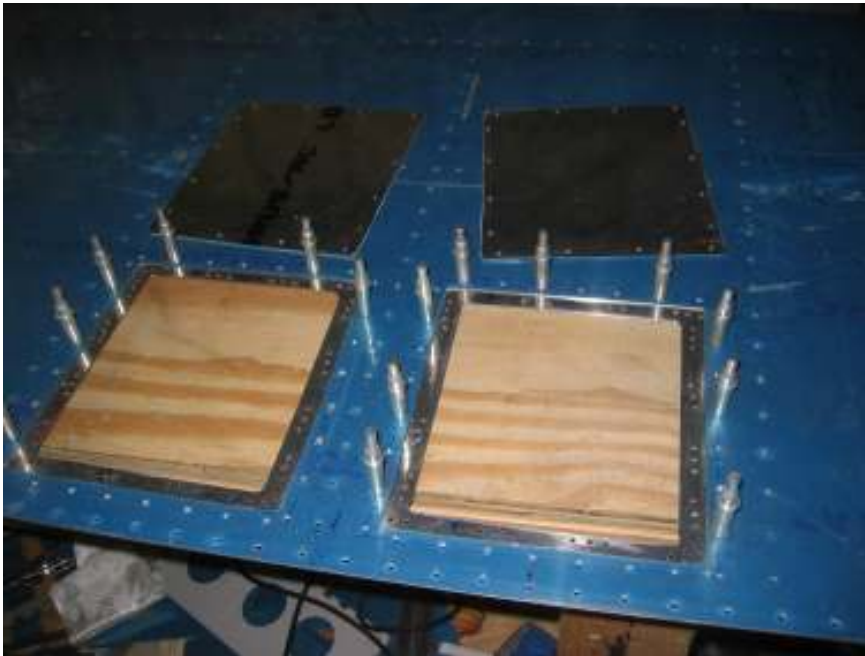


Glass gaps on upper cowl air inlet brace
Use Adel clamp to fasten a few wires
Enlarge front propeller plate holes and mount it on
Drill hole for canopy lock
Total time: 6 hours (1019 hrs)

3/31/2006, Friday



Cut spinner



Cut front deck access hole mounting brackets and panels
Drill rivet holes and nutplate holes for front deck access hole panels
Countersink and dimple
Push down baffle airseal and try to fit cowls (not successful in closing)



Mount main and E-bus fuse boxes
Total time: 8 hours (1027 hrs)

4/2/2006, Sunday

Try to close cowls
Rivet 8 nutplates on front deck access hole panels
Rivet airseal material to lower cowl inlet
Trim airseal material for cowl closing, still have a little problem
Total time: 2 hours (1029 hrs)

4/3/2006, Monday



Fit spinner and drill holes



Crimp on Molex connectors for flash lights



Cut front deck access panel to replace is center with fiber glass
Total time: 6 hours (1035 hrs)

4/4/2006, Tuesday

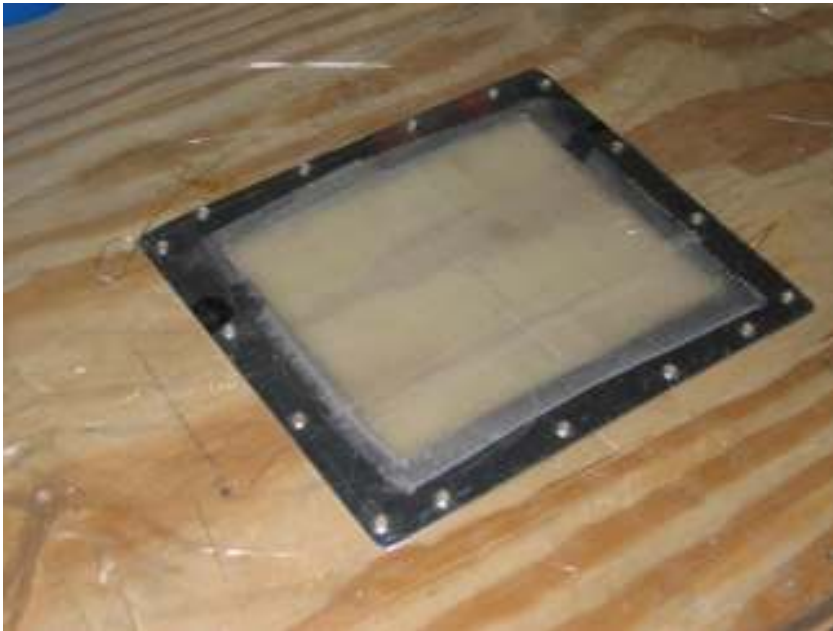


Install nutplates for spinner
Install a few Adel clamps in the engine compartment
Trim air inlet fairing further to fit airbox airseal material
Trim left front baffle to fit the added glass clothe on the air inlet
Total time: 5 hours (1040 hrs)

4/5/2006, Wednesday

Crimp on connectors at the wing tip end for strobe lights
Drill fuel pickup fittings to conform to the Service Bulletin
Close upper and lower cowls
Total time: 4 hours (1044 hrs)

4/6/2006, Thursday



Glass access panel

Convert front deck access panel to fiber glass in order to mount antenna under



Install nuts for cabin heat door



Sand and add glass bubbles to cowl
Add missing airseal material
Total time: 5 hours (1049 hrs)

4/7/2006, Friday

Rivet map box to the instrument panel
Drill USB and warning light holes on instrument panel
Prime instrument panel
Finish up fiber glass work on access panel and air inlet
Spread paint instrument panel (bad runs)
Total time: 4 hours (1053 hrs)

4/10/2006, Monday

Sand access panel again
Smooth sand air inlet and tail
Re-connect switches (input on top, output on bottom)
Repaint instrument panel
Print panel labels
Total time: 4 hours (1057 hrs)

4/11/2006, Tuesday



Remount panel
Total time: 7 hours (1064 hrs)

4/12/2006, Wednesday



Continue panel work
Clear paint over panel lettering



Seat belt bolts torque



Fuel pickup nuts safety
Install parking brake and cabin heat cables



Total time: 7 hours (1071 hrs)

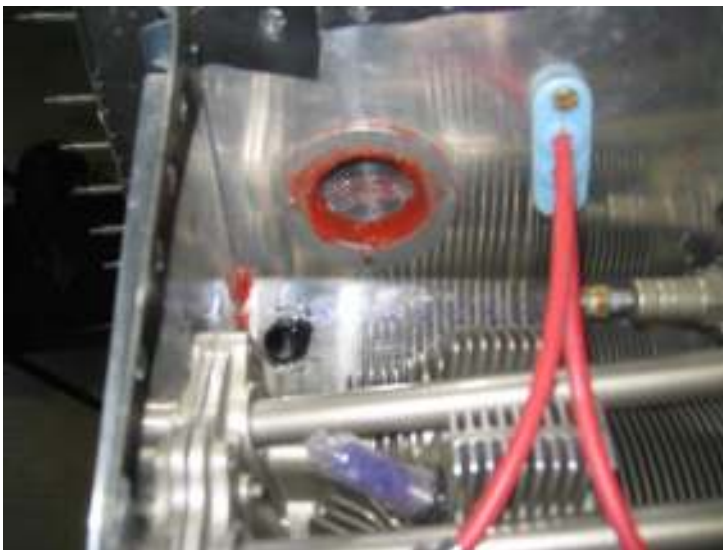
4/13/2006, Thursday



Safety oil dip stick



Install fuel overflow tube



Drill and install gascolator cool air blast tube



Rearrange wires



Install nutplate for Adel clamp to hold extra wire length
Drill left elevator trailing edge into table
Fly with Arnold
Total time: 5 hours (1076 hrs)

4-14-2006, Friday

Install nutplates for lower cowl
Dimple, countersink left elevator trailing edge



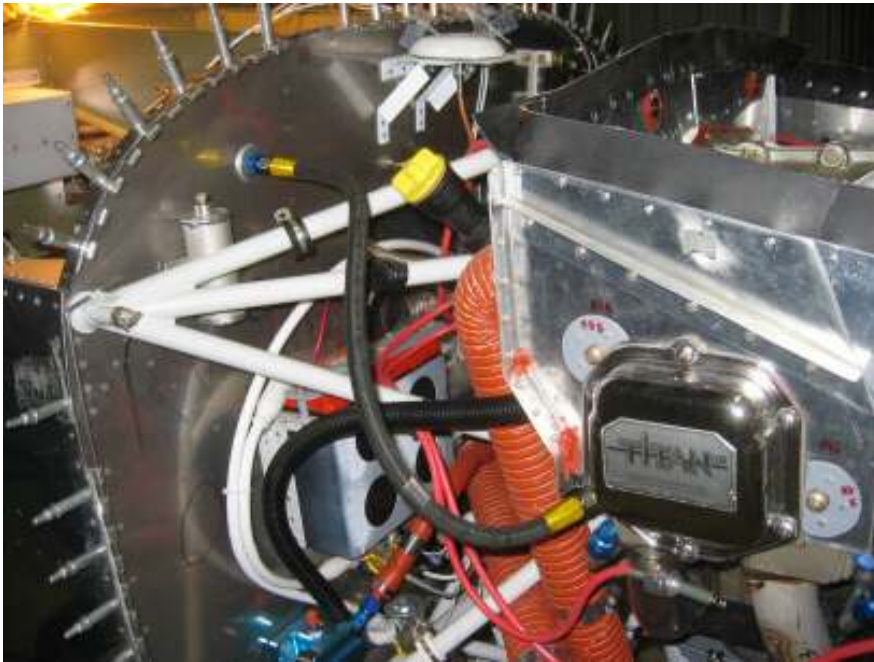
Sand all fiber glass parts



Pro-seal fuel tanks



Pro-seal left elevator trailing edge



Install Manifold pressure line
Total time: 7 hours (1084 hrs)

4-17-2006, Monday

Replace left heat muff air inlet with a disk to seal it off.
Connect alternator field breaker
Put on switch labels
Label main buss and E-buss
Tap windshield holes on roll bar
Install nutplate and Adel clamp on subpanel to secure parking brake cable
Modify front center subpanel to accommodate number 1 USB port on the panel
Fit windshield and top front skin
Total time: 7 hours (1091 hrs)

4-18-2006, Tuesday

Take a ride on Super Vicking

4-19-2006, Wednesday



Final installation of carb heat



Panel label done



Pitot line connection (both end at wing done)



Partially install prime line (waiting for fuel pressure line location)



Rivet access panel supports, drill compass and COM 2 antenna hole, mount COM 2 antenna on windshield

Install instrument screws for ELT remote, Hobb meter, Turn and Bank

Total time: 7 hours (1098 hrs)

4/21/2006, Friday

Rivet left elevator trailing edge

Drill, countersink and glass in aluminum strip to elevator tips

Rivet rudder bottom

Fill and glass rudder top and bottom gaps

Total time: 5 hours (1103 hrs)

4/22/2006, Saturday

Install wings and flaps

Test landing, taxi lights and wig-wag relay

Nav and Strobe do not work

Wing tips do not match



Total time: 3 hours (1106 hrs)