

10/10/2005, Monday

Remove cabin top skin
Organize hanger
Work on new sliding frame
Mount firewall ground tab
Total time: 4 hours (529 hrs)

10/11/2005, Tuesday

Trim bottom front ends of sliding frame
Drilling sliding frame holes using holes in canopy as guides



Study and assemble sunshield

Total time: 6 hours (535 hrs)



10/13-10/20/2005 Design electrical systems and planning avionics

10/21/2005, Friday



Install clamps for fresh air inlets
Cut and drill map box angles
Match drill map box halves
Drill map box cover
Glass in VOR antenna in left wing tip.
Total time: 3 hrs (Total time: 538 hrs)

10/22/2005, Saturday



Prime map box parts



Cut hole in sub-panel and mount reinforcement angles



Rivet map box two halves together



Cut opening in the panel.
Total time: 6 hours (544 hrs)

10/29/2005, Saturday

Drill map box door hinge

Enlarge opening in the panel for map box to allow door to open properly

Total time: 2 hours (546 hrs)

10/30/2005, Sunday

Install brake lines

Misc work

Total time: 2 hours (548 hrs)

11/5/2005, Saturday



Drill canopy skirt to the frame



Install plastic tube to protect brake lines
Total time: 3 hours (551 hrs)

11/6/2005, Sunday

Solder NAV antenna to left wing tip

Drill BNC connector mounting hole on the last rib of left wing



Debur and prime crotch seat belt mounting brackets
Total time: 2 hours (553 hrs)

11/12/2005, Saturday

Glass in the soldered NAV antenna connector in left wing



Drill and rivet in crotch seat belt mount
Tried to pump brake fluid and failed.
Total time: 4 hours (557 hrs)

11/13/2005, Sunday



Bend canopy rear skirt
Try to pump brake fluid again, failed.
Total time: 3 hours (560 hrs)

11/19/2005, Saturday

Drill for bend wip com antenna



Drill for stub transponder antenna



Drill right canopy rear skirt



Glass in marker beacon antenna in right wing tip



Glass left, right HS tips and VS tip
Bend canopy left rear skirt
Total time: 4 hours (564 hrs)

11/21/2005, Monday



Remove cardboard support from tips, trim edges, glass in support from the back



Drill the left side rear canopy skirt



Cut shim for the firewall ground tab and drill the hole and mount it.



Drill holes for the canopy track



Left and right sides of the canopy skirts



HS right side tip riveted in



HS left side tip riveted in



VS tip riveted in

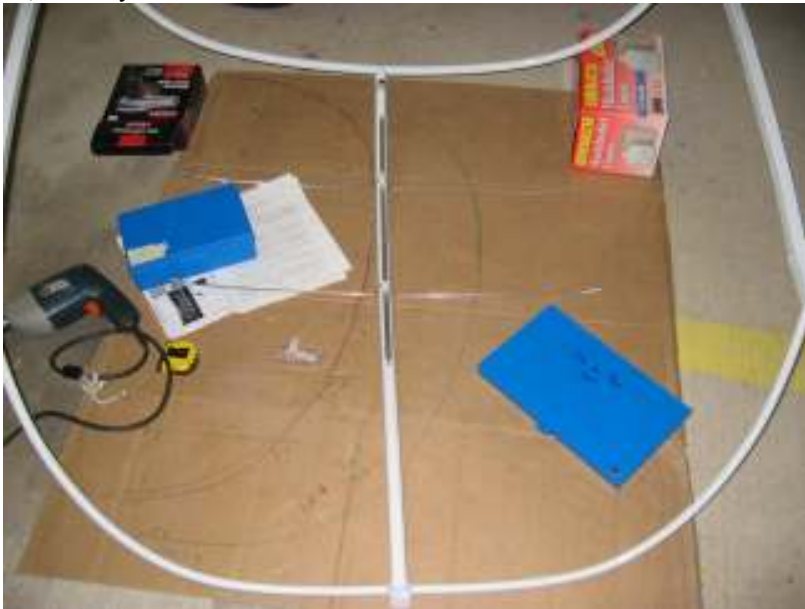


Trim rear skirts again for better fit
Drill holes for the doghouse (drill first holes in canopy, then, the frame)

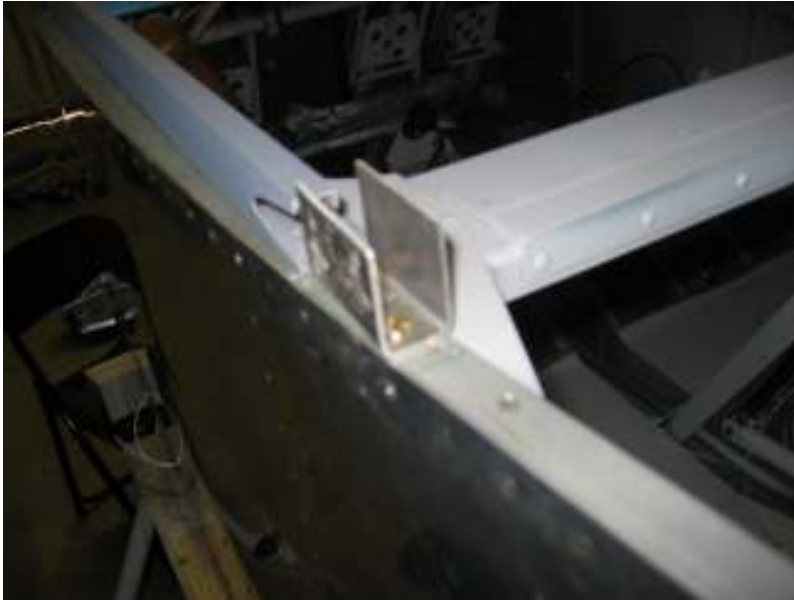


Remove protective films from the canopy.
Bend canopy frame further for better fit.
Drill holes for frame to roller screws.
Total time: 7 hours (571 hrs)

11/22/2005, Tuesday



Drill, tap and mount Kroger sunshield
Enlarge all holes in sliding frame to #30



Drill and mount bracket for rear canopy block



Enlarge holes in canopy and rivet front and top.



Remove all panels in rear cabin



Finish canopy latch
Total time: 6 hours (577 hrs)

11/23/2005, Wednesday

Enlarge all hole (use heat gun to heat canopy before each hole drilling)



Debur all holes then prime all skirts



Rivet right side of the canopy skirts



Drill rear block
Total time: 7 hours (584 hrs)

11/24/2005, Thursday



Finish riveting left side canopy skirts



Drill auxiliary battery tray top brace



Drill mounting holes for belly bend COM antenna



Mount shoulder harness



Drill four sets of mounting holes for baggage hold down
Enlarge holes for the canopy top rail
Total time: 7 hours (591 hrs)

11/26/2005, Saturday



Finish auxiliary battery box (right side) and mount it on the firewall.
Total time: 4 hours (595 hrs)

11/27/2005, Sunday

Fabricate auxiliary battery relay reinforcement plate and drive it in place.
Total time: 3 hours (598 hrs)

12/3/2005, Saturday



Rivet last rivet on left rear canopy skirt



Rivet reinforcement plate for auxiliary battery relay (help from Li-Fen)
Mark up instrument panel for radio/EFIS/EIS/gages
Bring panel and tools home
Total time: 5 hours (603 hrs)

12/9/2005, Friday

Cut EIS hole

Total time: 2 hours (605 hrs)

12/10/2005, Saturday

Cut EFIS and Radio stack holes

Total time: 3 hours (608 hrs)

12/11/2005, Sunday

Pick up more tools from hanger

12/12/2005, Monday

Drill holes for AP, LRI, AS, and Alt

Total time: 3 hours (611 hrs)

12/13/2005, Tuesday

Drill ignition hole, cut radio stack mounting brackets, drill in place

Total time: 3 hours (614 hrs)

12/14/2005, Wednesday

Debur and enlarge holes

Total time: 2 hours (616 hrs)

12/15/2005, Thursday

Drill LRI mounting holes and misc adjustment

Drill timer hole

Total time: 1 hour (617 hrs)



12/16/2005, Friday

Make GPS antenna firewall mounting bracket

Total time: 2 hours (619 hrs)

12/19/2005, Monday

Enlarge two holes on canopy track and fasten the track

Fasten transponder antenna

Bring more tools home

Total time: 1 hour (620 hrs)

12/20/2005, Tuesday

Drill Mounting holes for AS and ALT

Cut panel for ELT remote panel

Total time: 2 hours (622 hrs)

12/21/2005, Wednesday

Make reinforcement plate for belly mount COM antenna

Test fit glove compartment

Debur GPS antenna bracket

Total time: 3 hours (625 hrs)

12/22/2005, Thursday

Drill out map box cam lock and rivet it to the panel

Drill radio brackets mounting holes to the bracket



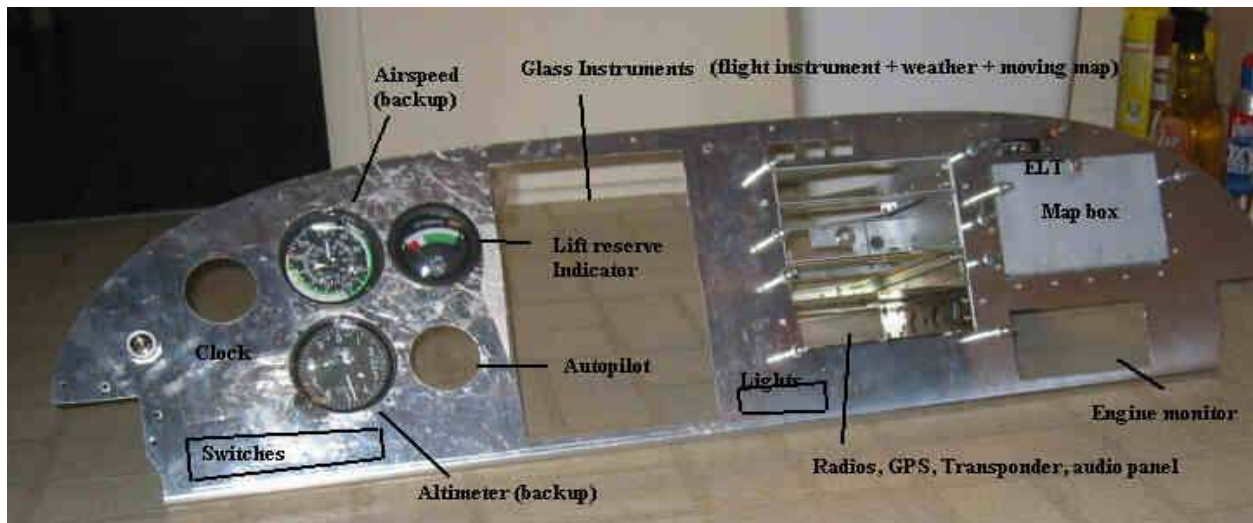
Fabricate and drill radio rack reinforcement bracket



12/23/2005, Friday
Cut opening for radio rack on subpanel



Prime/paint and rivet GPS antenna mounting plate to the firewall
 Trim canopy latch
 Partially drill eyeball light holes (need to enlarge)
 Run ELT antenna cable to the back
 Total time: 3 hours (628 hrs)



Total time: 3 hours (628 hrs)

12/27/2005, Tuesday

Additional work on subpanel opening for radio

Cut, form, drill, and install connection between battery contactors and starter contactor.



Mount E-bus and diod for E-bus



Enlarge eyeball light holes, drill mounting holes, wire eyeball lights
Mount dimmer circuit board
Misc. wiring
Total time: 7 hours (635 hrs)

12/28/2005, Wednesday



Drill, route, and mount ELT antenna cable,
Route Tail light/strobe cable
Misc wiring
Total time: 7 hours (642 hrs)

12/30/2005, Friday

Design electric system
Mount luggage Rivetnuts (1 set)
Test mount belly bend COM antenna
Total time: 8 hours (650 hrs)

1/3/2006, Tuesday

Finish luggage tie-down rivetnuts



Run strobe light cables



Misc wiring
Total time: 7 hours (657 hrs)

1/5/2006, Thursday
Crimp strobe light cable connectors
Fabricate doubler for current limiter and shunt
Misc wiring
Total time: 7 hours (664 hrs)

1/6/2005, Friday

Rivet current limiter and shunt doubler
Fabricate angles for subpanel radio opening
Misc wiring
Total time: 7 hours (671 hrs)

1/9/2005, Monday

Fabricate e-bus fuse tray (change plan)
Fabricate bracket for parking brake valve
Drill holes under seat ribs for antenna and strobe wires (re-route)
Drill headset and phone plug holes
Drill for subpanel radio opening angles
Total time: 8 hours (679 hrs)

1/10/2006, Tuesday





Re-route strobe wires



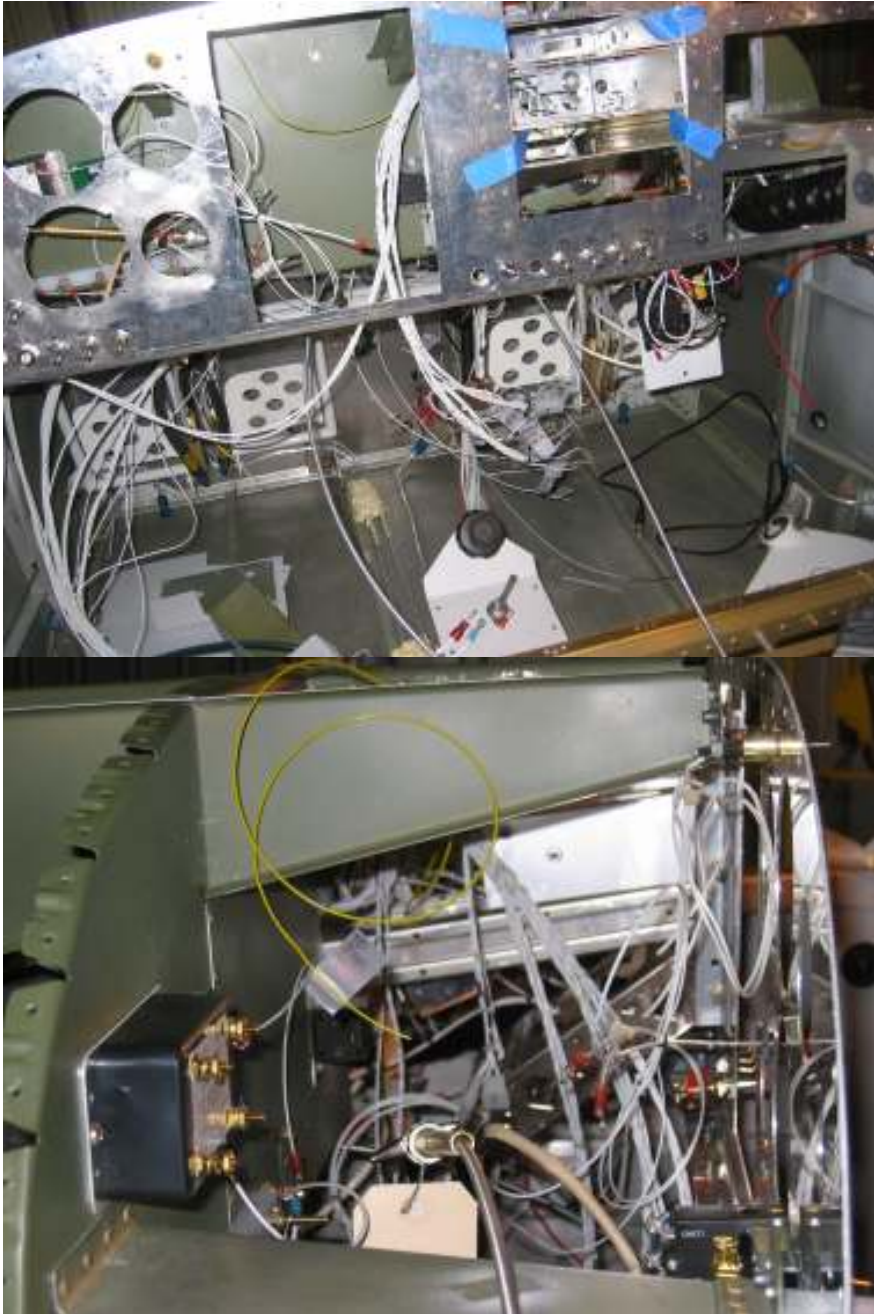
Mount e-bus tray to the subpanel and relocate e-bus and diode to the tray, install nutplate on panel for the tray
Determine parking brake control location and mounting bracket



Mounting wig-wag flasher



Rivet angles for the radio opening on subpanel



Fitting radio cables, connect radio power cables to the e-bus



Rivet parking brake mount



Running pilot and co-pilot phone and mic wires to the rear of arm rest.
Total time: 7 hours (686 hrs)

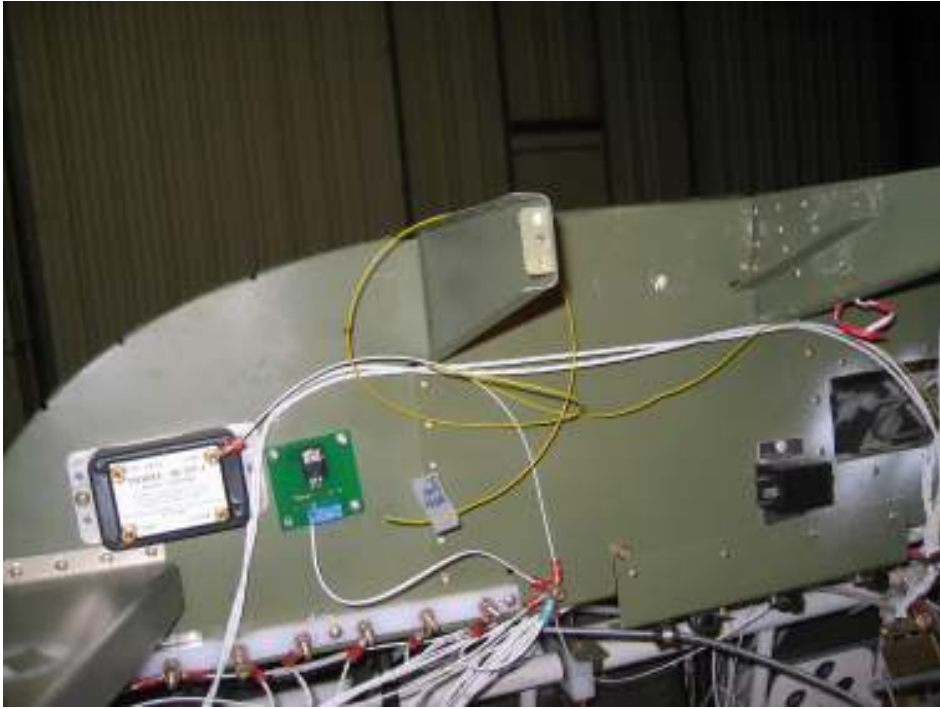
1/11/2006, Wednesday

Design parking brake control, fabricate mounting bracket, and cable mounting bracket
Cut control cable



Re-route mike and phone cables, drill for snap on bushing, solder co-pilot phone jack
Route co-pilot PTT wire back to the panel





Secure audio cables
Sand openings in panel, enlarge 2 1/8 holes, drill for music input
Total time: 8 hours (694 hrs)

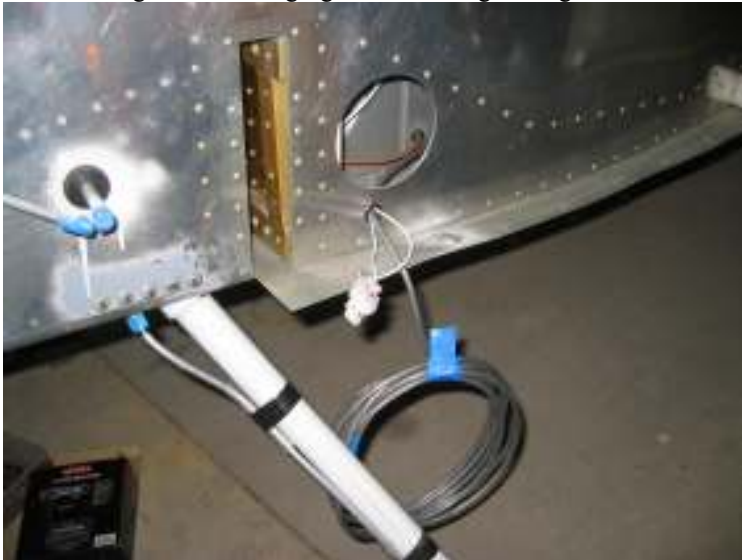
1/12/2006, Thursday



Solder the rest of the phone and mic jacks
Route pilot PTT cables



Fasten loose wires into bundles (wire tie)
Remove unused cables for wing strobe power installation
Run NAV light and landing light cables in right wing



Install AMP connector at wing root for light disconnect (except strobe)
Rivet parking brake control cable mount on firewall angle
Solder music jack
Total time: 6 hours (700 hrs)

1/13/2006, Friday



Wing wiring – nav, landing/taxi light
Wire for pitot



Begin put in screws for canopy (run out of washers)
Crimp belly COM antenna
Run pitot wire from wing root to panel
Total time: 5.5 hours (705.5 hrs)

1/16/2006, Monday



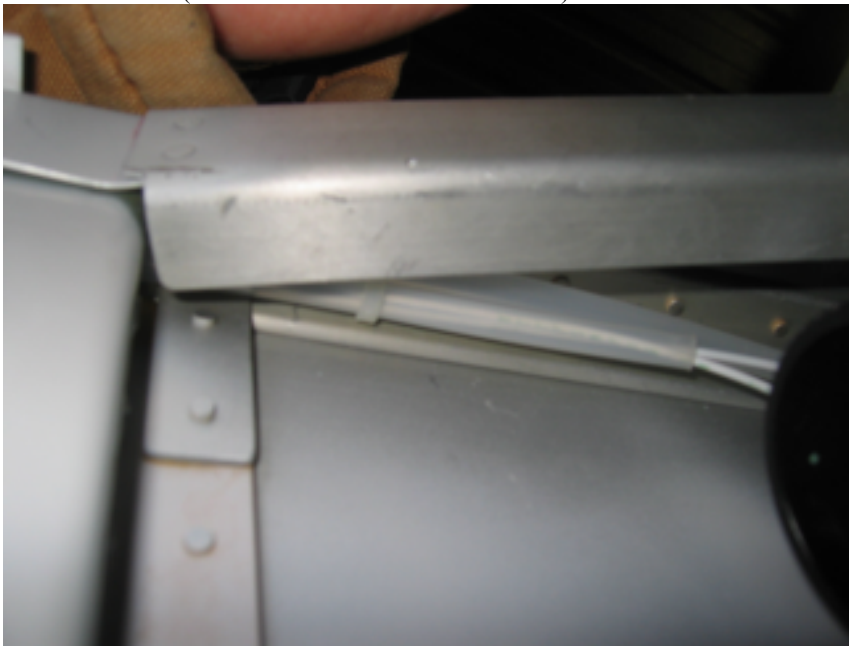
Drill through side fuselage for wire entry



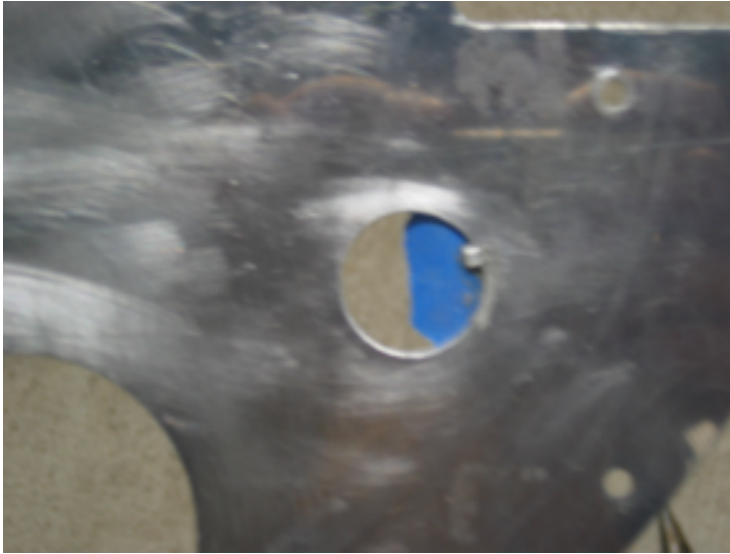
Drill hole on stick for PTT wire, fasten wire on fuselage



Drill a new hole (closer to the bottom of the channel) and re-route cables to avoid the push rod



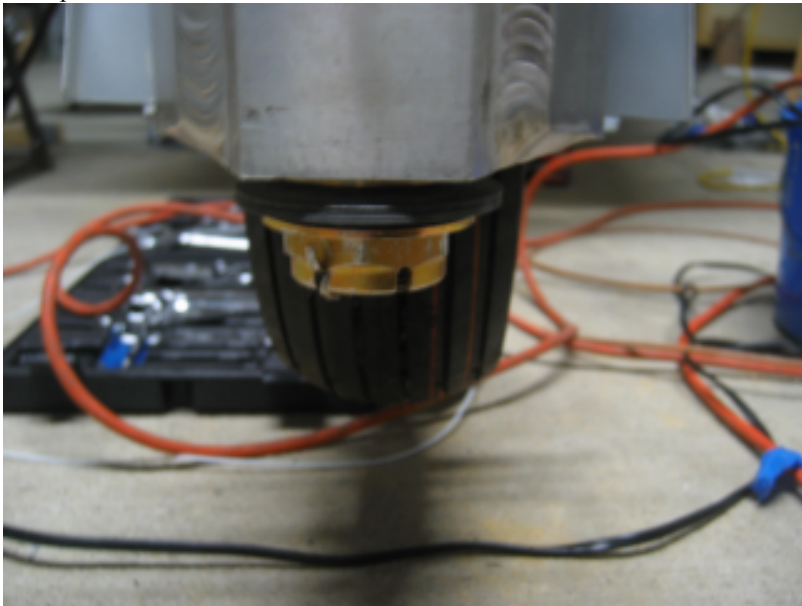
Insert a plastic tube to protect eyeball light wires from chafing



Glue a tab for magneto/starter switch
Re-layout switches and breakers on the panel
Total time: 5 hours (710.5 hrs)

1/17/2006, Tuesday

Drill panel for switches and additional 2 ¼ hole



Readjust nose gear break in (22 lb) nut, drill hole and safety it



Fasten screws to canopy side

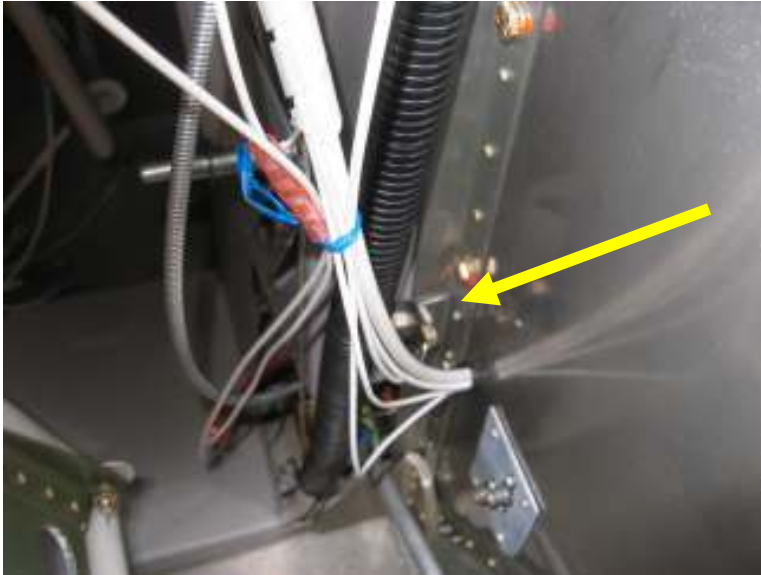


Grind down more on canopy latch tube
Drill canopy latch handle to the tube (top), tap it.



Finish fuel line on the floor





Install cabin heat control cable, fabricate angle for clamp and blind rivet it on firewall
Fit stick grips to sticks (sand inside)
Paint stick grips
Remove all blue plastics from empennage
Total Time: 6.5 hours (717 hrs)

1/18/2006, Wednesday

Install parking brake connections
Install #7 bushing and run manual trim cable through
Crimp and connect battery to battery bus
Crimp and connect main bus to master relay output
Mount and connect shunt and current limiter
Crimp and connect B-lead breaker to shunt
Add seal to fuel line connect to the fuel pump
Drill instrument holes (enlarge 2 ¼ holes further)
Re-arrange breakers and CBs
Total time: 5 hours (723 hrs)

1/20/2006, Friday



Finish parking brake
Misc wiring
Total time: 7 hours (730 hrs)

1/22/2006, Sunday



Paint grips (Tung oil, many layers)
Total time: 2 hours (734 hrs)

1/23/2006, Monday

Pump landing gear air pressure to the right value
Enlarge one hole passing the bulk head and re-route wires
Wire tie wires
Drill hole for carbine heat control cable
Total time: 5 hours (739 hrs)

1/24/2006, Tuesday

Cut oil door and open on upper cowl

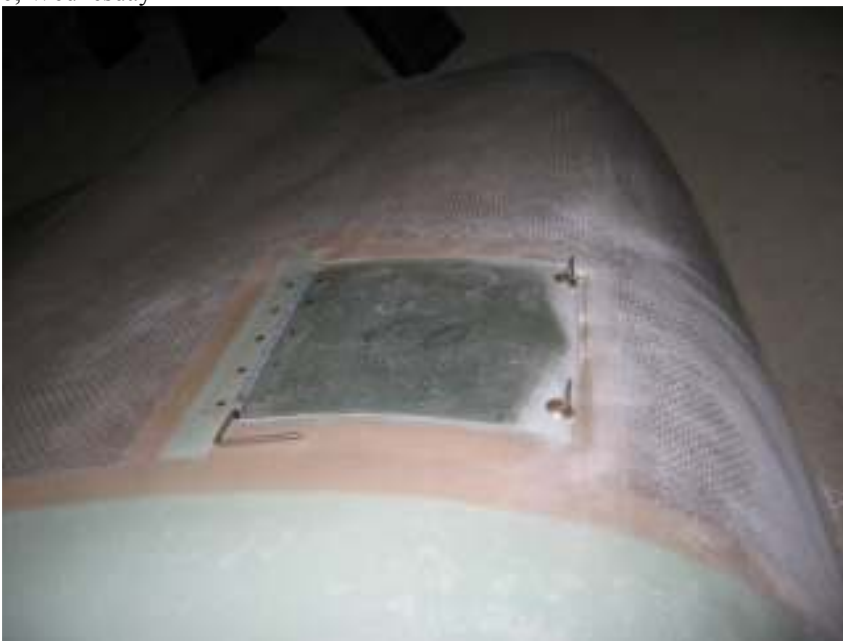


Cut and drill hinge for lower cowl to firewall

Try to pump brake fluid (incomplete)

Total time: 4 hours (743 hrs)

1/25/2006, Wednesday



Finish oil door

Cut long slot on the lower cowl for front gear leg

Re-wire switches, breakers, etc. on the panel

Cut top cowl hinge, match drill right side



Total time: 6 hours (751 hrs)

1/26/2006, Thursday

Fabricate AHRS mounting bracket

Fill brake fluid, found one leak on right side, bleed and waiting for fix

Check needed parts

Order the rest of firewall forward parts

Total time: 8 hours (769 hrs)

1/27/2006, Friday

Finish AHRS mounting system, reroute cable bundle to under the AHRS mount

Prime and rivet in place

Fix the brake leak. The right side connected to the exit was not properly flared.

Total time: 4 hours (773 hrs)

Engine shipped

1/30/2006, Monday

Order Vetterman exhaust

Pump brake fluid on both sides to get ride of air

Fix right fuel line to the wing root

Flare wing root fuel and air lines

Total time: 4 hours (777 hrs)

1/31/2006, Tuesday



Cut hinge and spacer, drill, and countersink for top right firewall side.
Cut hinge for the sides
Debur hinges on the bottom
File right bottom of canopy skirt to eliminate rubbing on the deck
Remove nose gear wheel brackets
Begin removing main gear wheel pant brackets (need to jack up the wheel)
Crimp wing root connector for pitot heat
Total time: 7 hours (784 hrs)

2/1/2006, Wednesday

Enlarge sub-panel hole for AHRS



Jack up wheels and remove wheel pant attachment brackets.
Wire some switches



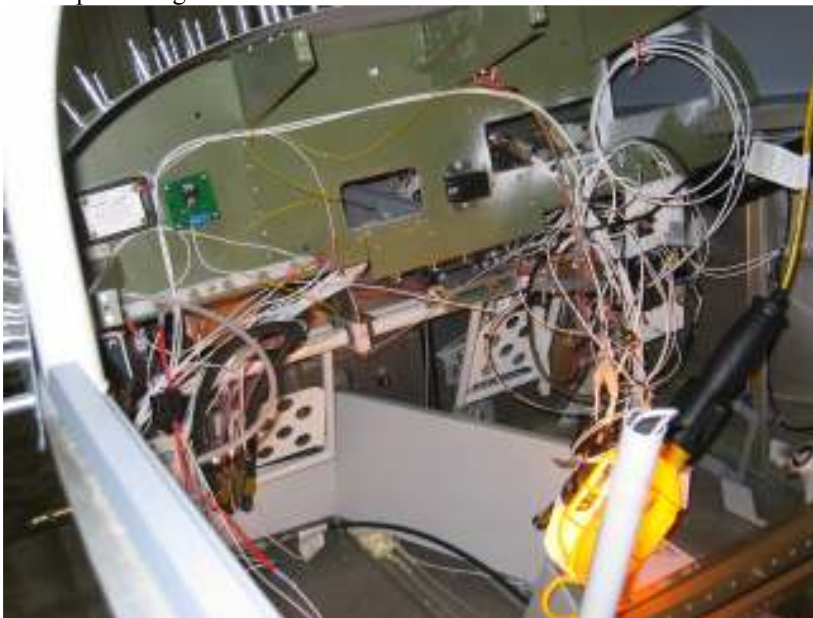
Use super-fill to fill the gap between the oversized panel 3 ¼" holes and instruments (airspeed and altimeter)

Fix mis-alignment of screw holes for side panel of flap column

Remove bracket for cabin heat control (drill hole instead using bracket)

Cut slot on cabin center column cover for cabin heat control cable

Roll top skin edge



Total time: 6 hours (790 hrs)