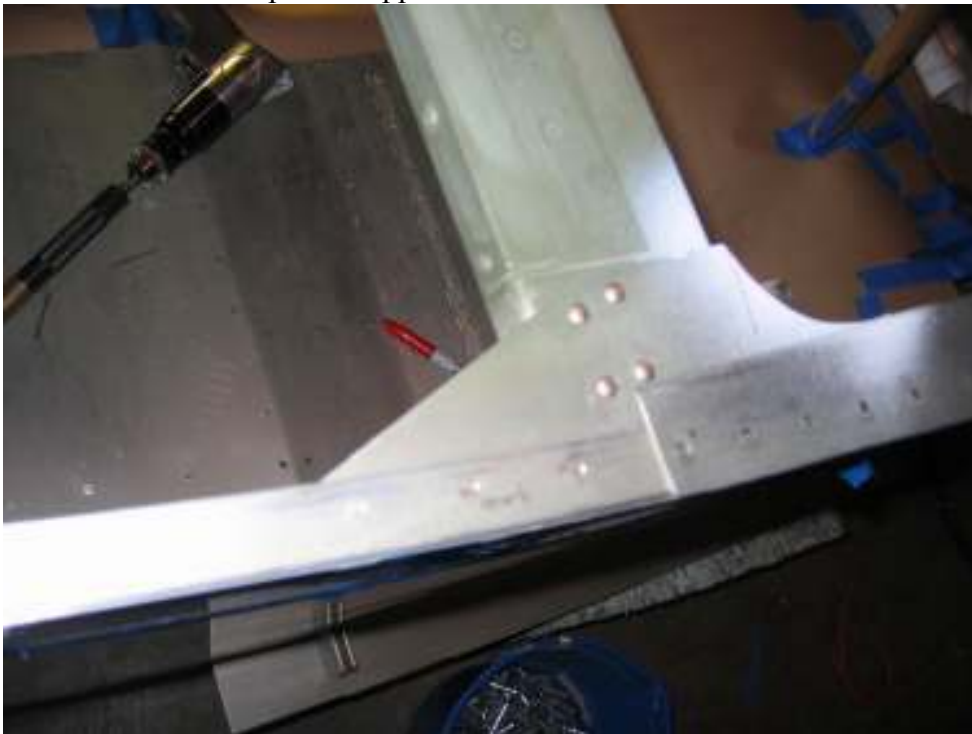


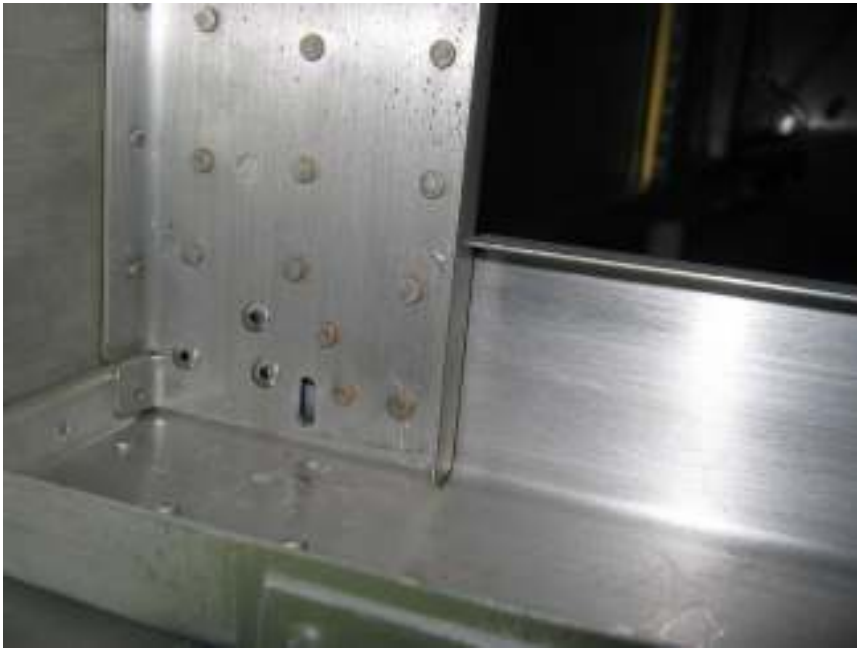
April 20, 2005, Wednesday



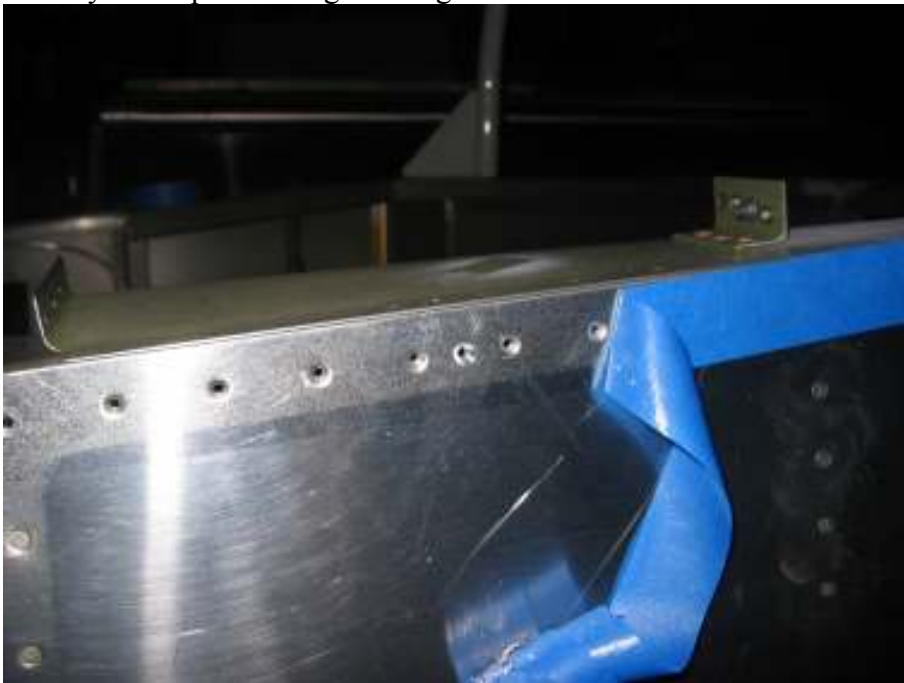
Match drill F6111 top skin support



Drill, countersink, and put in three rivets on the longeron (center of the picture)



Finish riveting the center column (view from the bottom, left is the fwd, up is left)
Use three blind rivets on each side where no rivet gun can reach.
Drill another hole on the column for static line passage, now static line can do all the way to the panel along the longron.



Drill and dimple hole for static line brace



Drill out blind rivets on the cover (right and left), remove the left side cover
Total time: 4 hours (305 hrs)

4-21-2005, Thursday

Remove the right side center column cover

Flare vent line for the right side and connect the line (hard to flare since it does not leave length for the tool to hold the tube.



Enlarge brake line holes and torque gear mount bolts (only on the side wall)



Partially installed brake line for the right side, There is a ding on the right side fuel line.
Need to replace it.

Total time: 4 hours (309 hrs)

4/22/2005, Friday



Finish roll bar spacers

Try to install master cylinder, discover that I need EZ-turn. Not found in town.
Order from Aircraft Spruce, order a lot of stuff from several sources

Total time: 3 hours (312 hrs)

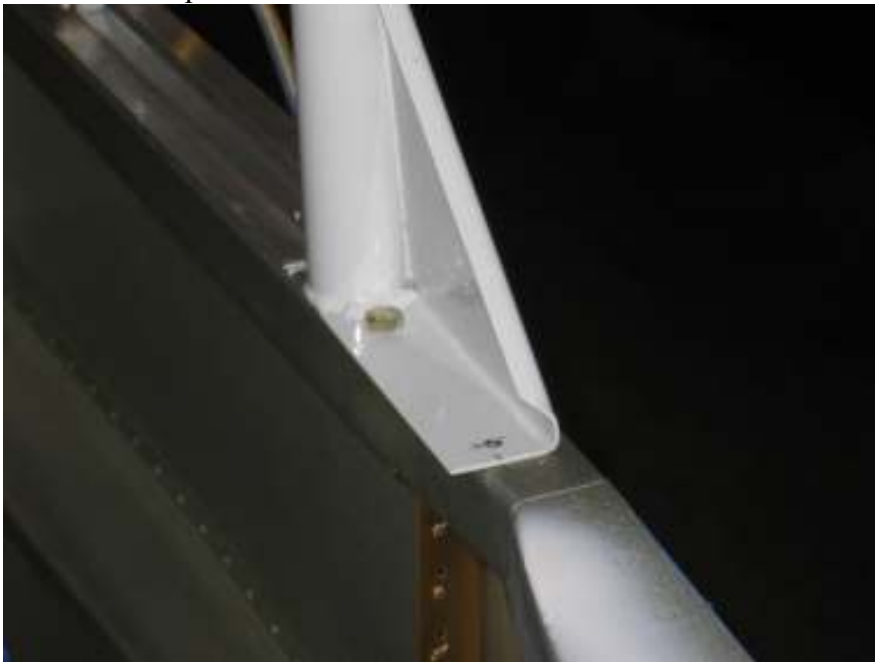
4/23/2005, Saturday



Spread foam for brake tubes

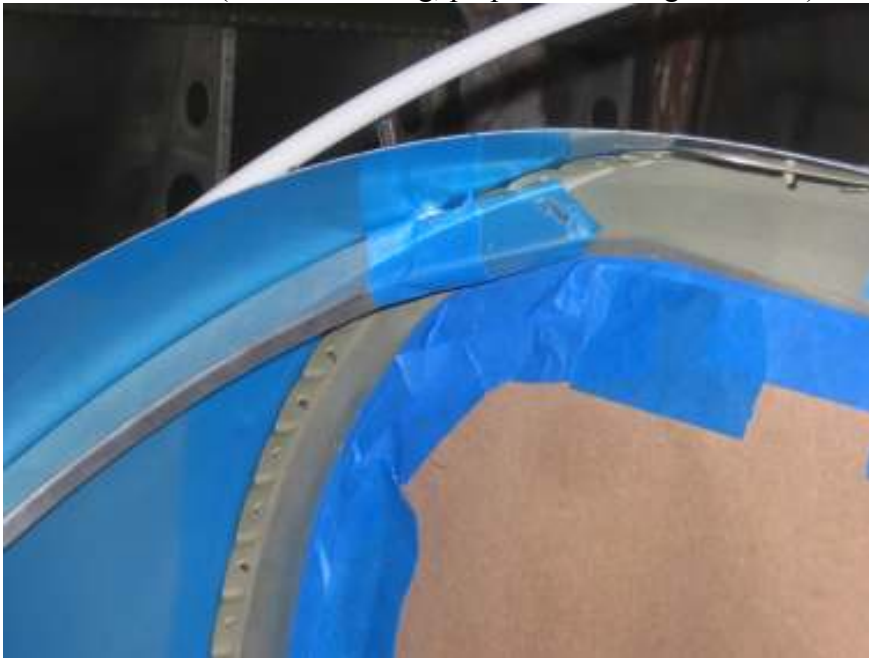


Determine position of roll bar (test assemble canopy frame as well)
Bend roll bar to within 1/16" of the 7/16" edge distance
Drill roll bar spacers





Drill for roll bar (time consuming, perpendicular angle is close)



Add extension to F6111 (cut too short on both sides)

Sort parts for painting

Total time: 10 hours (322 hrs)

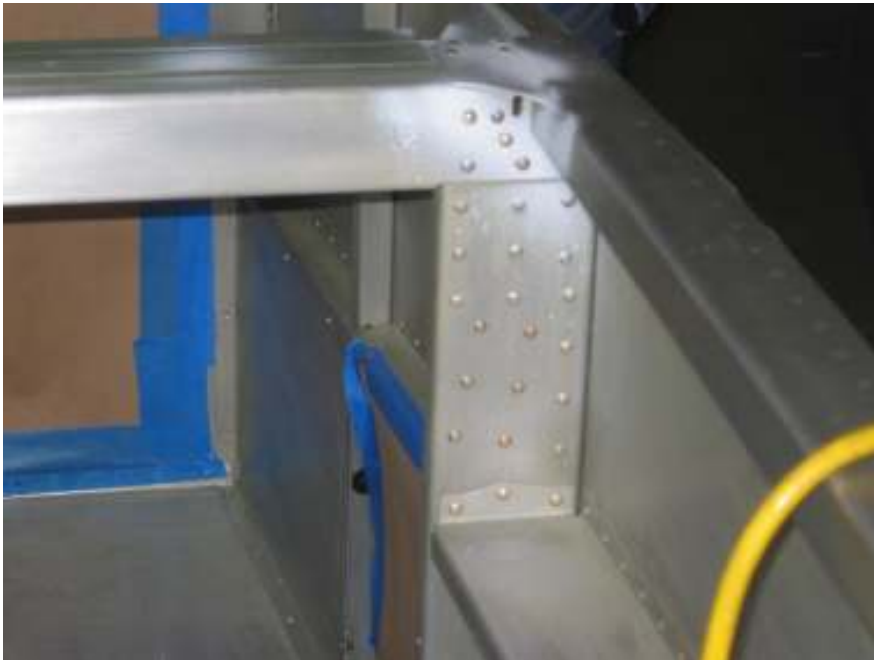
4/24/2005, Sunday



Rivet extension to F6111
Prime roll bar mounting spacer



Mount front bolts for roll bar



Finish rivets on the column (QB left for the tip-up)
Cut and fit wire screen to NACA air inlet. Will RTV it in.
Vacuum and sand interior, prepare for painting
Total time: 4 hours (325 hrs)

4/25/2005, Monday

Fasten aft bolts for roll bar (difficult task, put a tape under a wrench to hold the nut. Use White glue to hold the washer to the nut. Apply some RTV to hold the spacer to the longeron. Position the wrench with two fingers just under the hole. Use a wire to move the washer and nut to the center. Now insert the bolt. The first bolt took an hour of try and error. The second one took 2 minutes. Key is to wait a few minutes to allow the glue to dry a little.

Total time: 1.5 hours (326.5 hrs)

4/26/2005, Tuesday

Drill out two nutplates on the
Install two nutplates on the fuel selector plate
Sand and scotchbright all interior parts, panels, seat backs, etc.
Study ELT installation point

Total time: 3.5 hours (330 hrs)

4/27/2005, Wednesday



Drill and enlarge $\frac{3}{4}$ " holes through wing ribs except two inboard wing walk ribs (wait for the 12" drill extension.) Debur, sand, and prime all holes. Install Van's conduit. Apply EZ-turn to break master cylinder connectors and fasten them in place.



Prepare brake paddles for paint
Total time: 4 hours (334 hrs)

4/28/2005, Thursday

Insert conduit in half of left wing ribs
Total time: 1 hour (335 hrs)

4/29/2005, Friday





Insert conduit in most ribs in both wings (except three inboard ones. Still need to two ribs, waiting for the drill extension to arrive.) Use wire tie and RTV to fasten at each hole. Apply EZ-turn to wire wall mount break connector and put in break tub.
Total time: 2 hours (337 hrs)

4/30/2005, Saturday

Identify location of ELT



Wash all interior parts prepare for painting



Blind rivet column cover again.



Total time: 3 hours (340 hrs)

5/9/2005, Monday

Finish up conduits in the wing

Bend the 2nd float for fuel sender

Test fit left wing fuel sender and replacing fuel intake tube (stainless steel one)

Total time: 4 hours (344 hrs)

5/10/2005, Tuesday

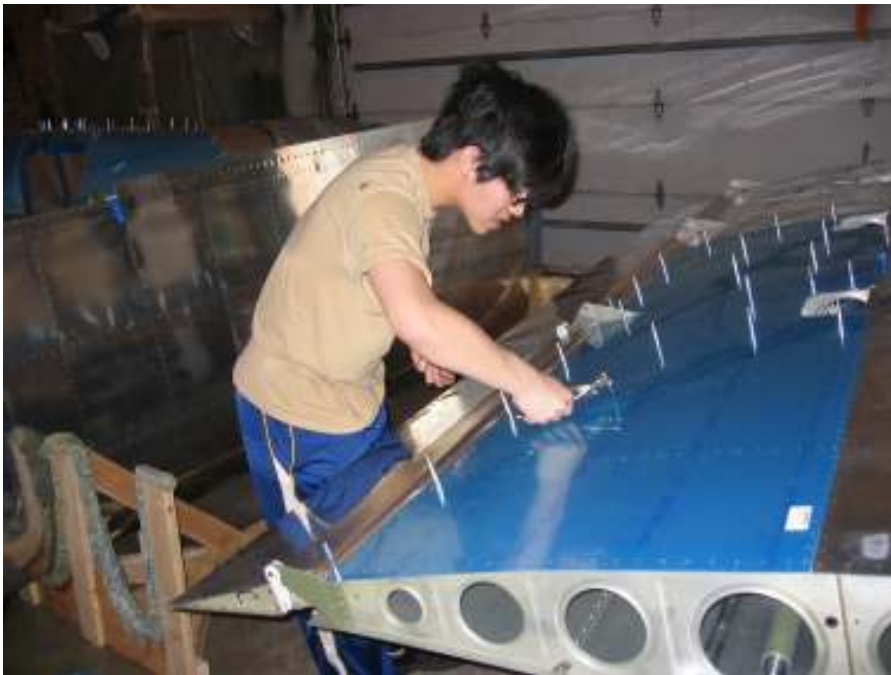
Wash both wings to remove protective coating from QB transport

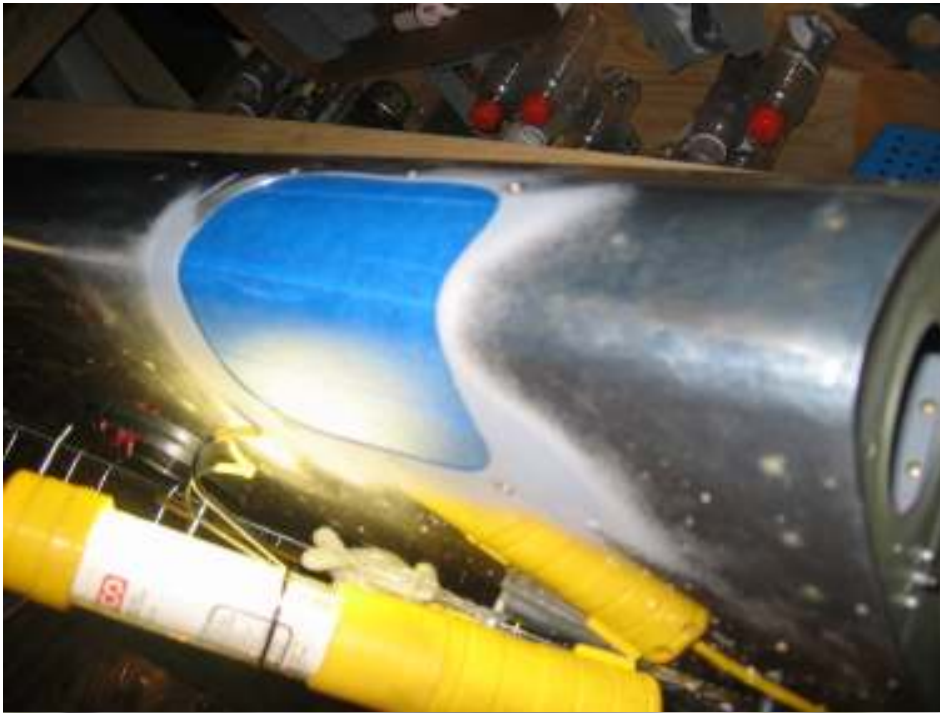
Work on the right landing light lense, modify drill bits (#30, #40, 5/32)

Drill out left evalator trailing edge rivets

Total time: 6 hours (350 hrs)

5/11/2005, Wednesday





Finish both leading edge light lenses and light fixture



Mark wing tip for cutting



Work on battery tray
Total time: 7 hours (357 hrs)

5/12/2005, Thursday



Finish most of the battery tray except two dimples



Paint interior and interior parts
Total time: 8 hours (365 hrs)

5/13/2005, Friady

Clean up painting equipment and remove masking papers



Modify hand squeezer to accommodate battery box



Rivet most except bottom three (can not reach with squeezer)
Total time: 3 hours (368 hrs)

5/23/2005, Monday

Replace one of the nutplates on the battery box (wrong size)



Rivet master relay and reinforcement plate and mounting master relay



Mount ELT and drive hole for conduit
Drill and rivet ends for the aileron push rods



Drill holes for flap control rods
Total time: 5 hours (373 hrs)

5/24/2005, Tuesday



Replace the right side fuel line (nicked at one point), remove main gear mount and retorque all bolts



Connect fuel lines to the fuel selector

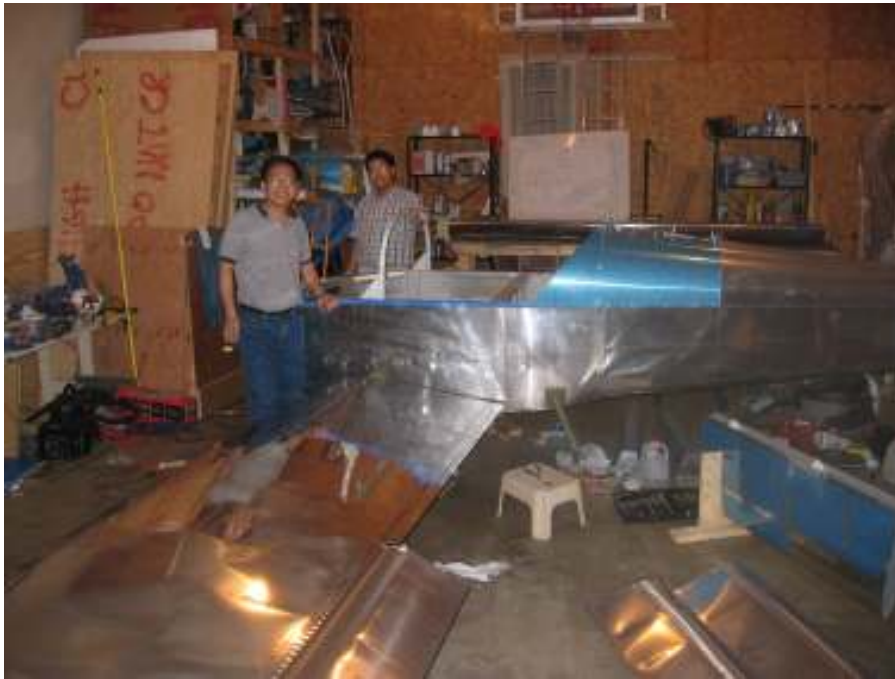


Install manual elevator trim cable

Installing electric fuel pump



Set both aileron positions, finalize wing control ballcranks



Mount left wing and read right wing for mounting
Total time: 9 hours (382 hrs)

5/25/2005, Wednesday



Fit right wing and tail



Drill holes for horizontal stabilizer



Trim vertical stabilizer
Total time: 8 hours (340 hrs)

5/26/2005, Thursday
Finish drilling for HS



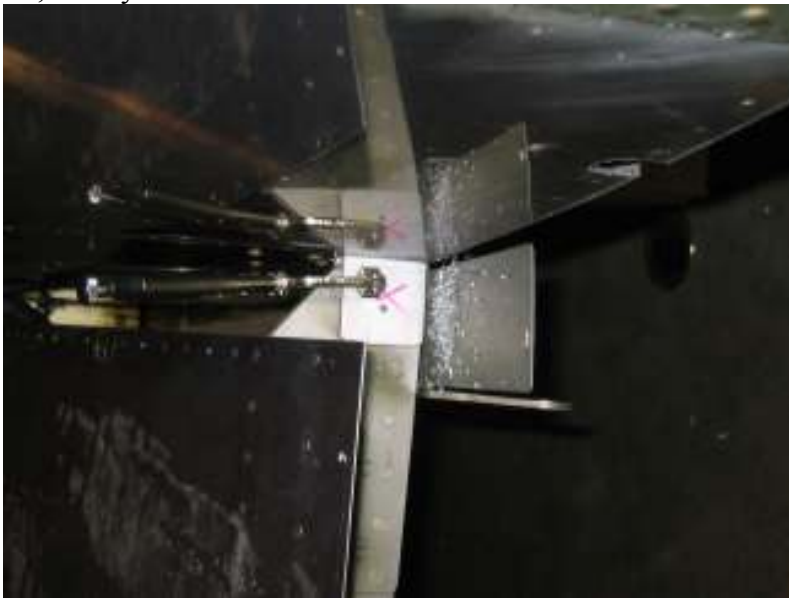


Drill for VS

Set wing incidence angle (same as the longeon) and sweep angle (0 degree).

Total time: 4 hours (344 hrs)

5/27/2005, Friday



Drill rear wing spars, front edge is within 1/8" and incidence angle perfect (checked five times)



Drill fuel tank mount brace (still need to drill the 1/4" hole)

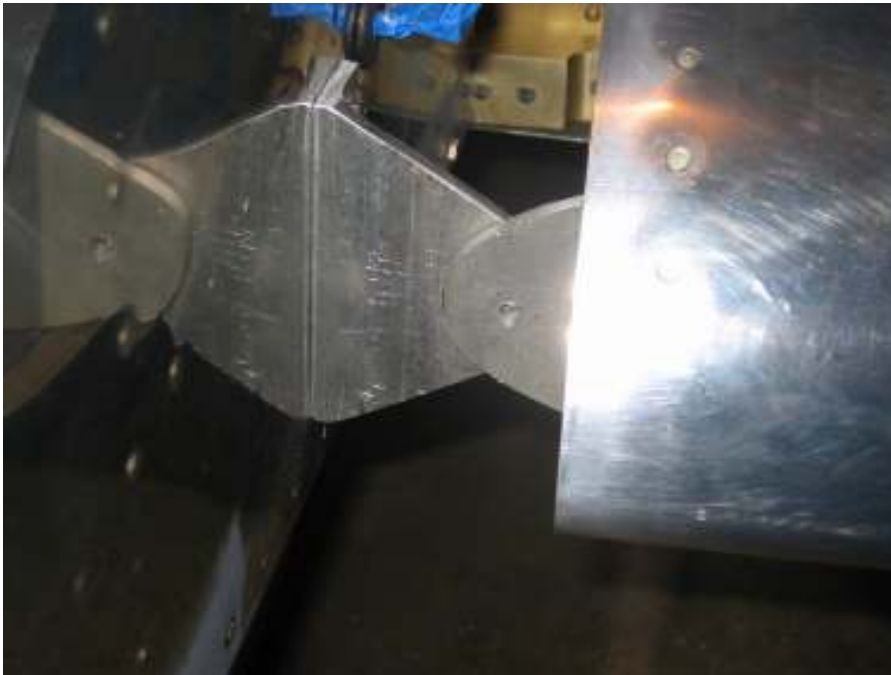


Double check the straightness of VS hinge braces (pass)
Total time: 4 hours (348 hrs)

5/28/2005. Saturday



Test mounting left elevator
Drill holes for VS rear spar
Drill front mounting brace for VS
Cut rubber channel for HS fairing



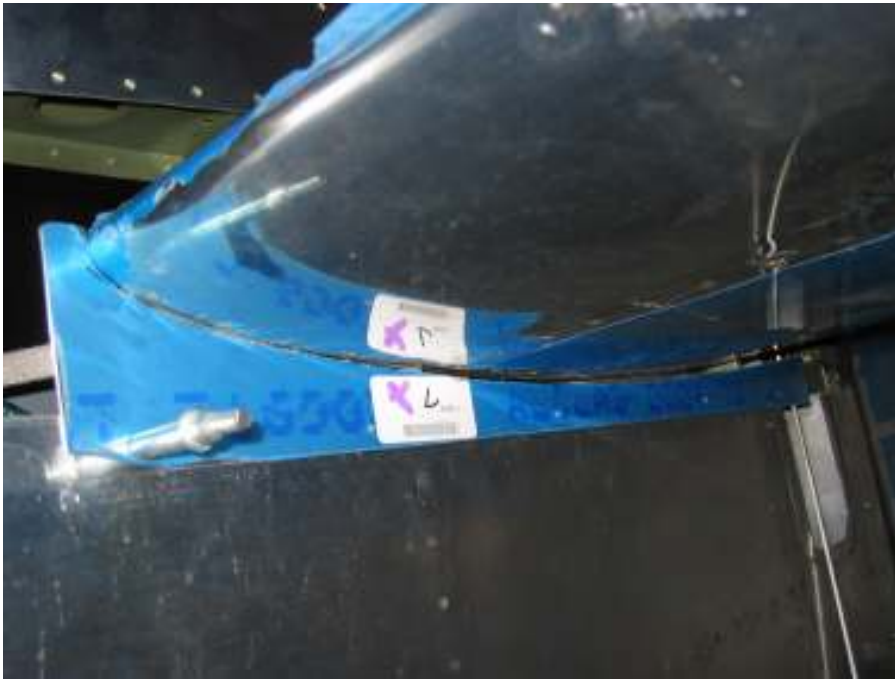
Drill 1/4" hole fuel tank mounting brace
Total time: 6 hours (354 hrs)

5/29/2005, Sunday

Select position for rudder paddle



Drill rudder cable links, fit rudder, connect brake line to the master cylinders



Drill and tap holes for HS fairing, trim fairing
Drill and dimple rudder control cable outlet cover
Total time: 8 hours (362 hrs)

5/30/2005, Monday





Trim empennage fairing, match drill holes for #6 screws, heat gun change shape
Locate ELT antenna location at the tail



Torque rudder paddle mount
Total time: 7 hours (369 hrs)

5/31/2005, Tuesday



Finish trim and sand empennage fairing



Match drill wing root fairings (drill nutplate holes on wings)





Enlarge flap control rod exit holes and test installing flaps
Trying on flap control (Show Planes)
Total time: 9 hours (378 hrs)

6/1/2005, Wednesday

Painting parts that missed painting last time
Painting screw heads
Mounting flap position control module
Finish drilling #8 screw holes on fuselage/wing root cover
Disassemble both wings, VS



Prepare for drilling elevator horns
Total time: 9 hours (387 hrs)

6/2/2005, Thursday



Mount rudder control column with actuator and control module



Drill and install nutplates on right wing root (partially done)



Install elevators to HS and drill holes on the horns

Adjust control stick
Total time: 6 hours (383 hrs)

6/4/2005, Saturday

Make final adjustment of push rod for elevator
Remove a stripped screw from the wing root nutplate
Some nutplates on wing root should be K1100 instead of K1000, need to replace
Install nutplates on VS
Trim VS front spare support brace



Install nutplates on HS
Correct problem on left elevator manual trim cover plate (need K1100-06 nutplates)
Match drill, prime, and rivet mounting nut assemble to the trim cover plate
Match drill fiberglass tip for HS
Disassemble HS and elevators from the fuse
Deburr all holes drilled for HS and VS installation
RTV shim for HS front mounting bracket to the deck



Drilling ELT mounting hole at the tail
Total time: 8 hours (291 hrs)

6/5/2005, Sunday



safety wire flap motor rod end bolt



Drill, countersink, glue aluminum strip for HS and VS tips, make pattern for VS tip closure

Shorten VS front spar mounting bracket for better fit



Replace and finish nutplates for right wing root

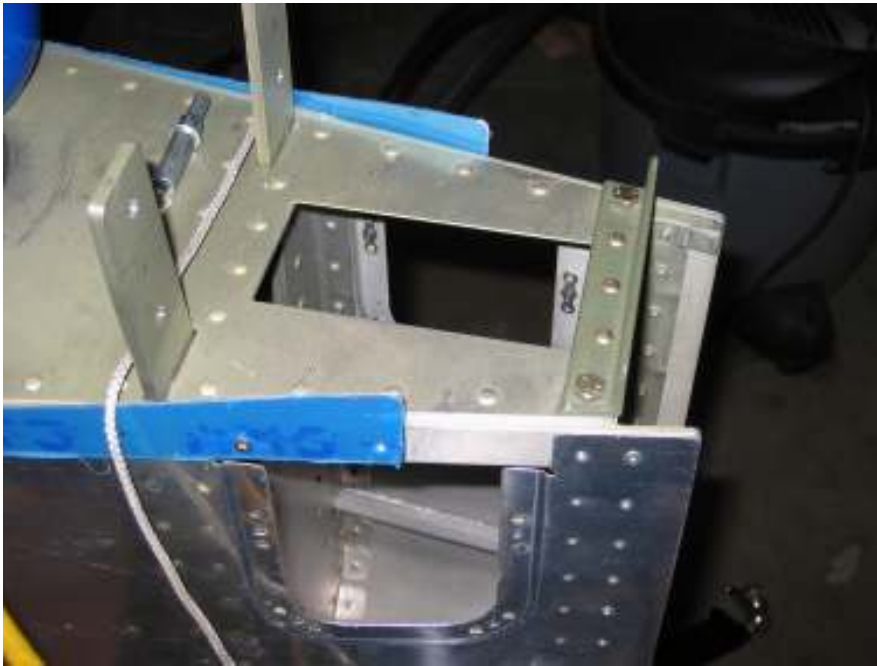


RTV right NACA fresh air inlet and mount air vents



Switch wings to work on
Total time: 6 hours (297 hrs)

6/6/2005, Monday



Rivet and torque elevator rear stop

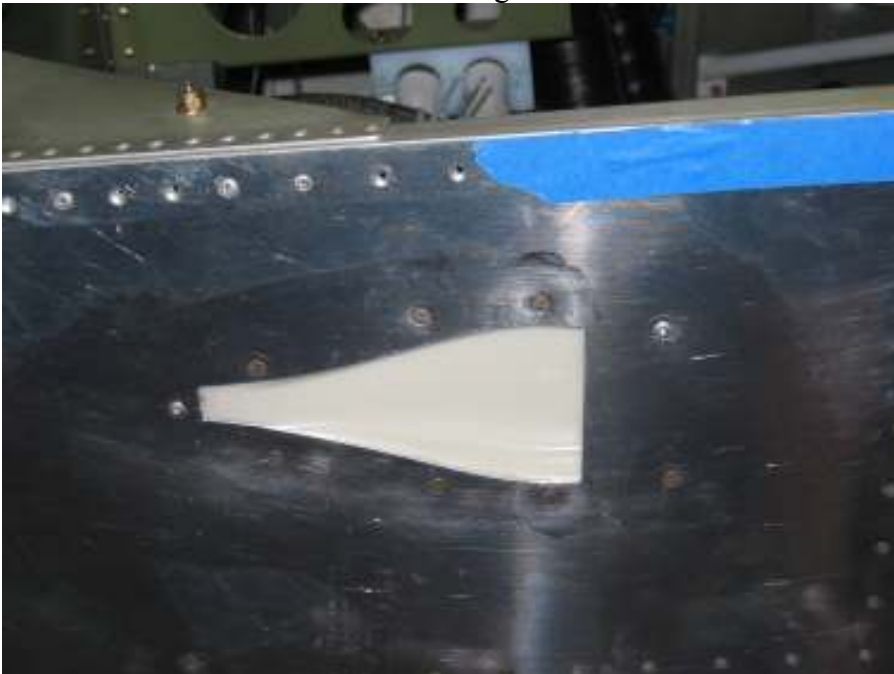


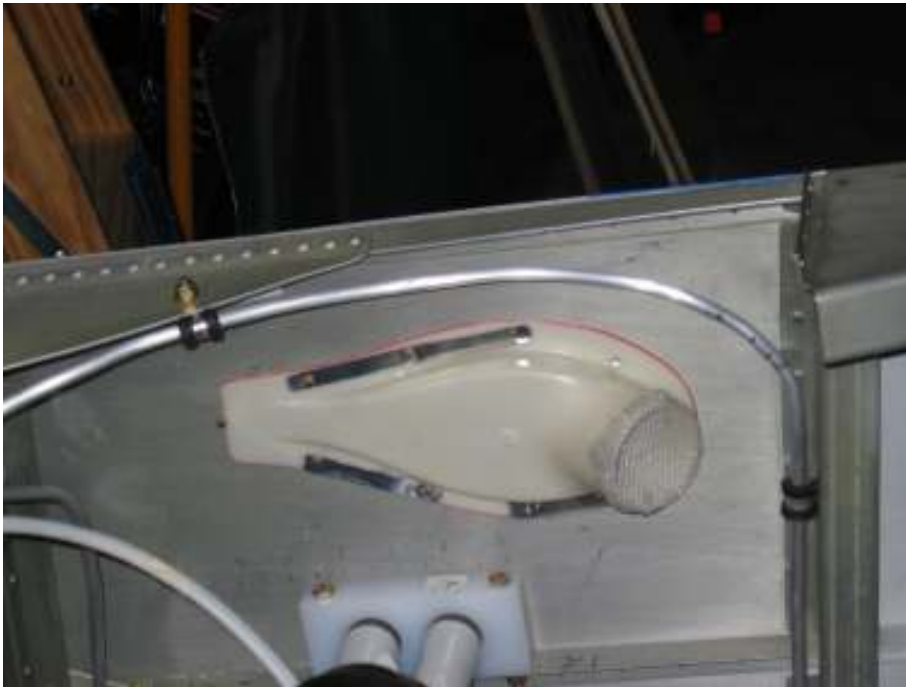


Finish wing root nutplates



Glue then rivet rudder cable exit fairing





Glue then rivet NACA fresh air outlet
Total time: 8 hours (305 hrs)