

3/28/2005, Monday



Build saw horse for the tail (24" height), fuselage is leveled
Prime inside of aileron and elevator pushrods
Match drill NACA air inlet
Total time: 4 hours (204 hrs)

3/29/2005, Tuesday



Finish rudder and break (no line connected yet) paddles

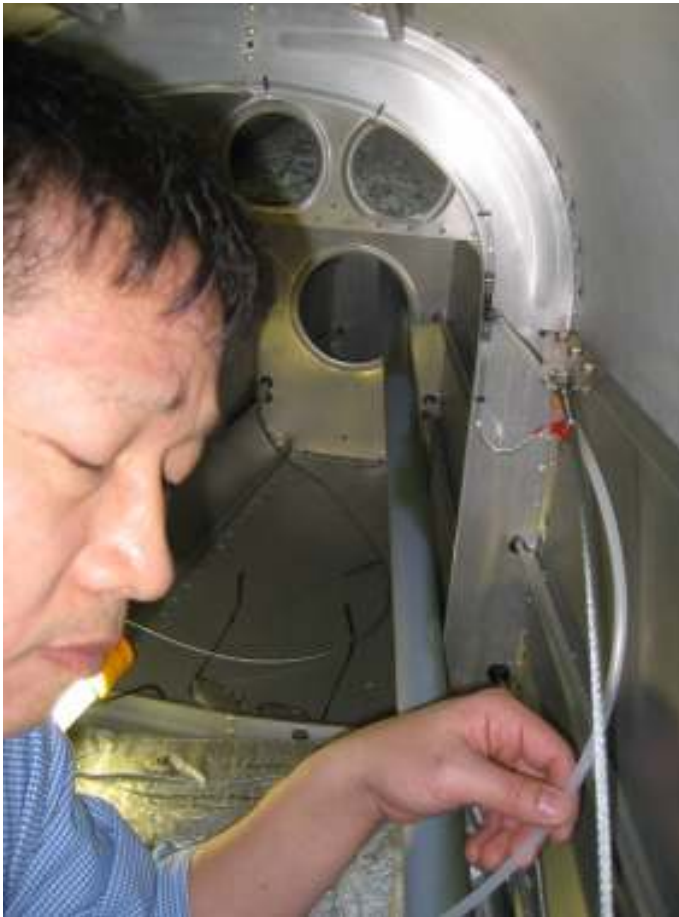


Finished aileron and elevator pushrod end riveting



Finish the 2nd seat back
Total time: 4 hours (208 hrs)

3/30/2005, Wednesday



Finish static system
Dimple left wing (bottom skin)
Work on fresh air outlet
Partially drill out bad rivets on left wing flap fairing
Total time: 4 hours (212 hrs)

3/31/2005, Thursday

Nutplates for misc parts
Dimple right wing (bottom skin)
Total time: 2 hours (213 hrs)

4/1/2005, Friday

Study all wing and fuse drawings and identify parts still need to be fabricated.
Fabricate parts
Total time: 3 hours (216 hrs)

4/2/2005, Saturday



Use RTV to seal the small gap on the air vent
Fabricate parts for empennage attachment
Total time: 3 hours (219 hrs)

4/3/2005, Sunday



Drill pilot holes on firewall, enlarge the heating 2" hole, and the 3/8" hole

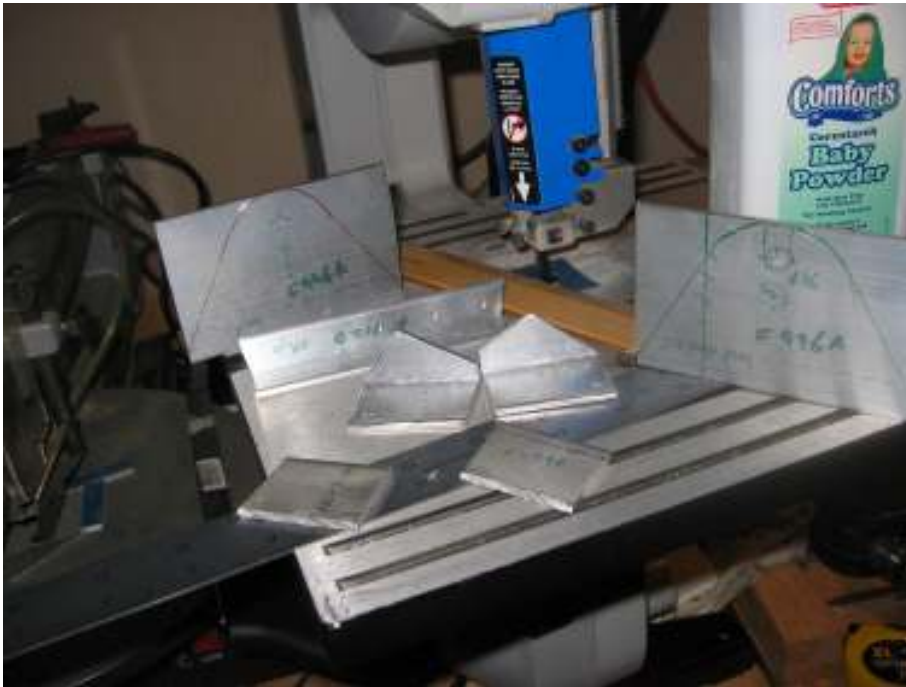


Build the front cover



Sit in for a moment
Fit panel, subpanel, top skin again
Total time: 4 hours (223 hrs)

4/4/2005, Monday



Fabricate fuel tank mounting brace
Add two more rivets to the elevator push rod (had four instead of the six called for)
Reattach push rod, torque all bolts on the control column.



Tap tie down hole and drill four holes
Misc tasks
Total time: 4 hours (227 hrs)

4/5/2005, Tuesday
Misc tasks



Finish wiring manual aileron trim
Begin working on aileron brackets
Total time: 4 hours (231 hrs)

4/6/2005, Wednesday



Aileron bracket installation, need to trim inboard pushrod bolt.
Total time: 2 hours (233 hrs)

4/7/2005, Thursday



Drill fresh air outlet mounting brace
Nutplate under the right



Drill hole for tail tiedown



Drill hole for static line



Enlarge holes on the fire wall



Fabricate brace for flasher power supply mounting behind the baggage compartment



Match drill center column cover (left)
Total time: 5 hours (238 hrs)

4/8/2005, Friday

Discover center column cover position was not correct. Reposition and redrill.

Total time: 2 hours (240 hrs)

4/9/2005, Saturday



Fabricate and match center panel supports.
Match drill engine control braces on panel and subpanel
Dimple firewall



Rivet panel support and air outlet braces



Close off baggage compartment rear side panels



Fix bad rivets on right wing flap fairing
Countersunk already lightly dimpled holes on the rear wing spar



Some of the parts



Fabricate F996A wing tank mounting braces, still need to bend them and smooth edges



Rivet the corner nutplate on the baggage compartment floor

Rivet last three rivets on the flap control column. Grease the bolt before final assembly

Check all drawings for missing steps and parts

Total time: 12 hours (252 hrs)

4/10/2005, Sunday

Smooth edges of F996A

Prime parts fabricated

Prime seat back support braces

Drill out AN426-6 rivets on horizontal stabilizer (forgot to countersink), countersink and put in new rivets

Total time: 4 hours (256 hrs)

4/11/2005, Monday

Countersink holes in the front control channel cover

Rivet front control channel cover
Total time: 2 hours (259 hrs)

4/12/2005, Tuesday



Blind rivet both center column covers



Install flasher power supply behind the baggage compartment



Fabricate and install two clips for static line
Total time: 5 hours (264 hrs)

4/13/2005, Wednesday

Cut the screw for aileron to aileron pushrod connection



Fit both flaps to wings, insert bushing
Remove rudder
Clean up fuselage and begin preparation for interior painting
Total time: 5 hours (269 hrs)

4/14/2005, Thursday

Match drill and rivet nutplates for control cover

Rivet nutplates in the firewall recess

Rivet mounting bracket for brake lines on the firewall



Drill 3/4 holes for vent tube on the sides of airframe

Drill 5/16 holes for vent tube on the floor

Purchase 1" hole saw for the fuel line penetration

Study the manual elevator trim cable

Drill 3/4 hole on for the manual elevator trim control

Drill 1/2 hole on xx cover for manual elevator trim cable routing

Total time: 6 hours (275 hrs)

4/15/2005, Friday



Bend fuel line on the right hand side (without gear mount)

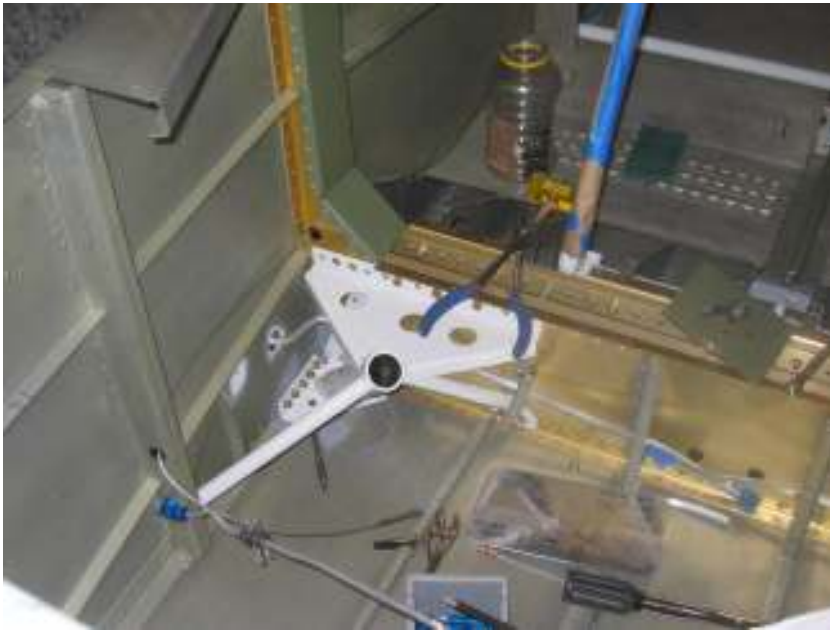


Begin prepare to mask for interior painting
Total time: 2 hours (277 hrs)

4/16/2005, Saturday



Match drill bolt holes on main gear mounts and gear legs



Install main gear mounts (not all bolts are torqued)



Counter sink two screw holes on the skin for each gear mount
Finished fuel line through gear mount
Drill holes for vent tube on the column
Partially completed vent line on the right hand side



More masking
Total time: 8 hours (285 hrs)

4/17/2005, Sunday

Complete masking for the interior painting



Remove flap control column



Finish both side vent tube (need flaring)



Modify two plates on the main bulkhead for sliding canopy

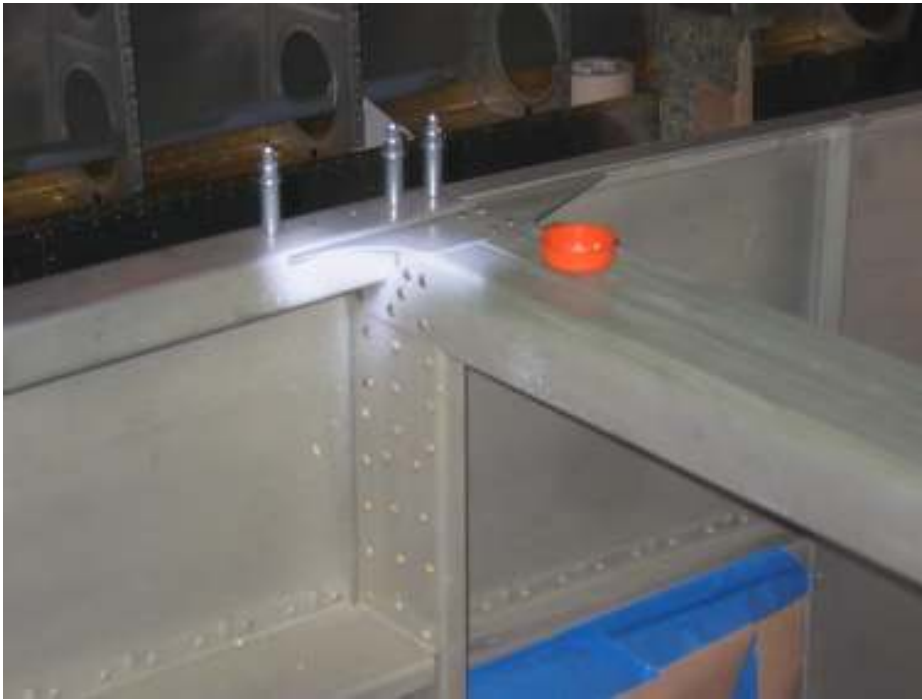


Grind 45 degree angle for vents



Grind hardware bolts for wing mating
Total time: 7 hours (292 hrs)

4/18/2005, Monday



Rivet column
Cleco top skin back
Total time: 2 hours (294 hrs)

4/19/2005, Tuesday



Fit curved support
Flare and install left vet tube, cut one of the screws short to avoid hitting the skin



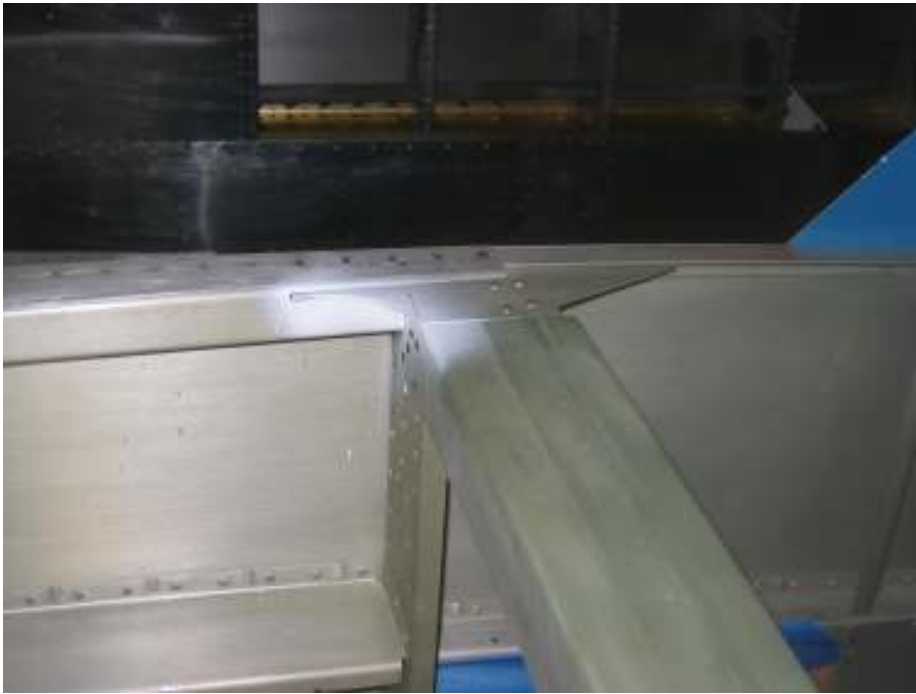
Fabricate brackets for roll bar attachment



Cut sliding bracket



Match drill, countersink and rivet tail tie down bracket



Finish riveting column
Total time: 7 hours (301 hrs)